



INSTALLATION INSTRUCTIONS

COMMERCIAL FRONT-LOAD WASHER

INSTRUCTIONS D'INSTALLATION

LAVE-LINGE COMMERCIAL À CHARGEMENT FRONTAL

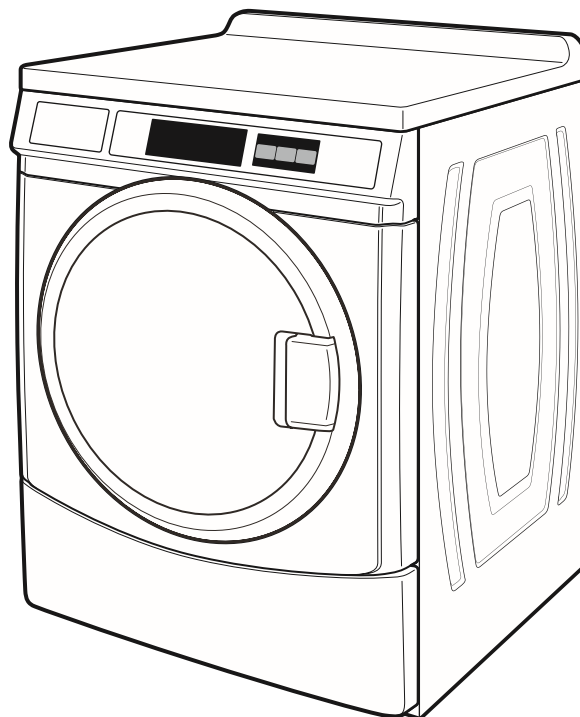
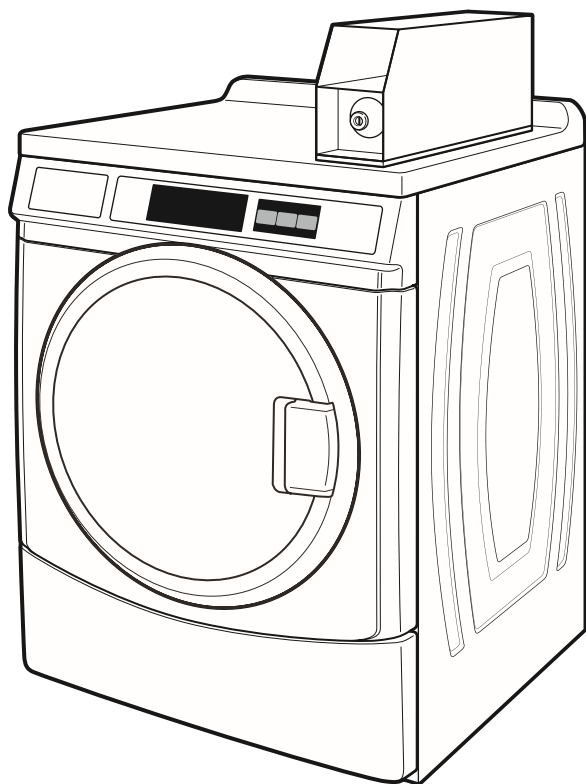
ISTRUCCIONES DE INSTALACIÓN

LAVADORA COMERCIAL DE CARGA FRONTAL

ISTRUZIONI D'INSTALLAZIONE

LAVATRICE COMMERCIALE CARICO FRONTALE

Table of Contents/Table de matières/Índice/Sommario2



Model/Modèle/Modelo/Modello
MHN33PD
MHN33PN

TABLE OF CONTENTS

WASHER SAFETY	3
WASHER DISPOSAL	4
INSTALLATION REQUIREMENTS	5
Tools and Parts	5
Options	5
Location Requirements	6
Drain System	6
Electrical Requirements	7
INSTALLATION INSTRUCTIONS	8
Remove Transport System	8
Power Cord Installation	8
Connect the Inlet Hoses	9
Connect the Drain Hose	9
Secure the Drain Hose	10
Level the Washer	10
Payment System Setup	11
Complete Installation	11
USER & SETUP INSTRUCTIONS	12
General User Information	12
Control Setup Procedures	12
Setup Codes	13
Washer Diagnostic Modes	16
WASHER CARE	17
Cleaning Your Washer	17
Water Inlet Hoses	17
ASSISTANCE OR SERVICE	18
Accessories	18
WARRANTY	18

ÍNDICE

SEGURIDAD DE LA LAVADORA	37
ELIMINACIÓN DE LA LAVADORA	38
REQUISITOS DE INSTALACIÓN	39
Herramientas y piezas	39
Opciones	39
Requisitos de ubicación	40
Sistema de desagüe	40
Requisitos eléctricos	41
INSTRUCCIONES DE INSTALACIÓN	42
Desmontaje del sistema de transporte	42
Instalación del cable de alimentación	42
Conexión de las mangueras de entrada	43
Conexión de la manguera de desagüe	43
Fijación de la manguera de desagüe	44
Nivelación de la lavadora	44
Configuración del sistema de pago	45
Complete la instalación	45
INSTRUCCIONES DE USUARIO Y PROGRAMACIÓN	46
Información general para el usuario	46
Procedimientos de programación del control	46
Códigos de programación	47
Modos de diagnóstico de la lavadora	50
CUIDADO DE LA LAVADORA	51
Limpieza de la lavadora	51
Mangueras de entrada de agua	51
ASISTENCIA O SERVICIO TÉCNICOS	52
Accesorios	52
GARANTÍA	53

Model Nomenclature

MHN - Maytag
33 - Model Type Number
PN - Electronic Control - Non-Pay
PD - Electronic Control - Coin Drop enabled

TABLE DES MATIÈRES

SÉCURITÉ DU LAVE-LINGE	20
MISE AU REBUT DU LAVE-LINGE	21
EXIGENCES D'INSTALLATION	21
Outillage et pièces	21
Options	22
Exigences d'emplacement	22
Système de vidange	23
Spécifications électriques	23
INSTRUCTIONS D'INSTALLATION	24
Dépose du système de transport	24
Installation du cordon d'alimentation	25
Raccordement des tuyaux d'alimentation	25
Raccordement du tuyau de vidange	26
Immobilisation du tuyau de vidange	26
Réglage de l'aplomb du lave-linge	27
Paramétrage du système de paiement	27
Achever l'installation	27
INSTRUCTIONS POUR L'UTILISATEUR ET DE CONFIGURATION	28
Informations générales pour l'utilisateur	28
Procédures de réglage des systèmes de commande	28
Codes de paramétrage	29
Mode de diagnostic du lave-linge	32
ENTRETIEN DU LAVE-LINGE	34
Nettoyage du lave-linge	34
Tuyaux d'arrivée d'eau	35
ASSISTANCE OU SERVICE	35
Accessoires	35
GARANTIE	36

SOMMARIO

SICUREZZA DELLA LAVATRICE	54
L'ELIMINAZIONE DELLA LAVATRICE	55
REQUISITI D'INSTALLAZIONE	56
Utensili e componenti	56
Opzioni	56
Requisiti di posizionamento	57
Sistema di scarico	57
Requisiti elettrici	58
ISTRUZIONI D'INSTALLAZIONE	59
Rimuovere il sistema di trasporto	59
Installazione del cavo di alimentazione	59
Collegare i tubi d'ingresso	60
Connessione del tubo di scarico	60
Fissare il tubo di scarico	61
Livellamento della lavatrice	61
Impostazione del sistema di pagamento	62
Completamento dell'installazione	62
ISTRUZIONI PER L'UTENTE E CONFIGURAZIONE	63
Informazioni generali per l'utente	63
Procedure di configurazione dei comandi	63
Codici di configurazione	64
Modalità diagnosi lavatrice	67
CURA DELLA LAVATRICE	68
Pulizia della lavatrice	68
Tubi di mandata dell'acqua	68
ASSISTENZA O SERVIZIO	69
Accessori	69
GARANZIA	retro di copertina

WASHER SAFETY

Your safety and the safety of others are very important.

We have provided many important safety messages in this manual and on your appliance. Always read and obey all safety messages.



This is the safety alert symbol.

This symbol alerts you to potential hazards that can kill or hurt you and others.

All safety messages will follow the safety alert symbol and either the word “DANGER” or “WARNING.”

These words mean:

⚠ DANGER

You can be killed or seriously injured if you don't immediately follow instructions.

⚠ WARNING

You can be killed or seriously injured if you don't follow instructions.

All safety messages will tell you what the potential hazard is, tell you how to reduce the chance of injury, and tell you what can happen if the instructions are not followed.

The washer shall be disconnected from its power source during service and when replacing parts. If the removal of plug is foreseen, it shall be clearly indicated that the removal of the plug has to be such that an operator can check from any of the points to which they have access that the plug remains removed.

If this is not possible, due to the construction of the washer or its installation, a disconnection with a locking system in the isolated position shall be provided.

IMPORTANT SAFETY INSTRUCTIONS

WARNING: To reduce the risk of fire, electric shock, or injury to persons when using the washer, follow basic precautions, including the following:

- Under certain conditions, hydrogen gas may be produced in a hot water system that has not been used for 2 weeks or more. **HYDROGEN GAS IS EXPLOSIVE.** If the hot water system has not been used for such a period, before using the washing machine, turn on all hot water faucets and let the water flow from each for several minutes. This will release any accumulated hydrogen gas. As the gas is flammable, do not smoke or use an open flame during this time.
- Before the washer is removed from service or discarded, remove the door or lid.
- Do not install or store the washer where it will be exposed to the weather.
- Do not repair or replace any part of the washer or attempt any servicing unless specifically recommended in this manual or in published user-repair instructions that you understand and have the skills to carry out.
- See “Electrical Requirements” for earthing instructions.

SAVE THESE INSTRUCTIONS

WASHER DISPOSAL



This appliance is marked according to the European directive 2012/19/EU on Waste Electrical and Electronic Equipment (WEEE).

By ensuring this product is disposed of correctly, you will help avoid potential negative consequences for the environment and human health, which could otherwise be caused by inappropriate waste handling of this product.

The symbol on the product, or on the documents accompanying the product, indicates that this appliance may not be treated as household waste. Instead it shall be handed over to the applicable collection point for the recycling of electrical and electronic equipment.

Disposal must be carried out in accordance with local environmental regulations for waste disposal.

For more detailed information about treatment, recovery and recycling of this product, please contact your local city office, your household waste disposal service or the shop where you purchased the product.

INSTALLATION REQUIREMENTS

Tools and Parts

Gather the required tools and parts before starting installation. The parts supplied are in the washer drum.

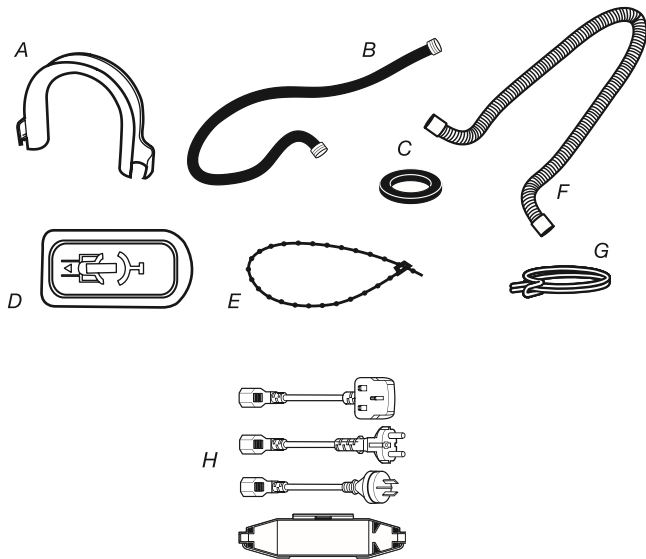
Tools needed for connecting the water inlet hoses

- Pliers (that open to 39.5 mm [1 5/16"])
- Flashlight (optional)

Tools needed for installation

- Open end wrenches 13 mm (1/2") and 14 mm (9/16")
- TORX T20®† Security screwdriver
- 6.3 mm (1/4") nut driver
- Level
- Wood block
- Ruler or measuring tape

Parts supplied



- A. U-shaped hose form
- B. Water inlet hoses (2)
- C. Inlet hose washers (4)
- D. Transit bolt hole plug (4)
- E. Removable tie strap
- F. Drain hose
- G. Hose clamp
- H. Power cord adapter kit

Alternate Parts

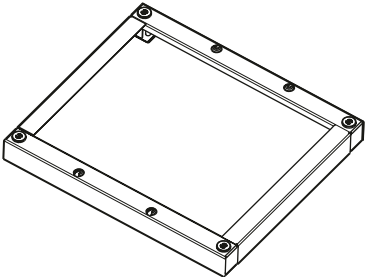
Your installation may require additional parts. If you are interested in purchasing one of the items listed here, contact your authorized Maytag distributor.

If you have	You will need to buy
Laundry tub or standpipe taller than 2.4 m (96")	Sump pump system (if not already available)
Overhead sewer	Standard 76 L (20 gal.), 762 mm (30") tall drain tub or utility sink and sump pump (available from local plumbing suppliers)
Floor drain	Siphon break, Part Number 285834; additional drain hose, Part Number 8318155; and connector kit, Part Number 285835
Drain hose too short	1.2 m (4 ft) drain hose extension kit, Part Number 285863

Options

Pedestal

You have the option of purchasing pedestals separately for this washer. The pedestal will add to the total height of the washer.



Optional pedestal

Pedestal Height	Approximate height with washer	Color	Part Number
73 mm (2 7/8")	1207 mm (47.5")	White	WHP0400VW

†® TORX and T20 are registered trademarks of Acument Intellectual Properties, LLC.

Location Requirements

NOTE: This washer is intended to be used in public areas.

Selecting the proper location for your washer improves performance and minimizes noise and possible washer “walk.”

Your washer can be installed under a custom counter, or in a basement, laundry room, or recessed area. See “Drain System.”

Companion appliance location requirements should also be considered. Proper installation is your responsibility.

You will need:

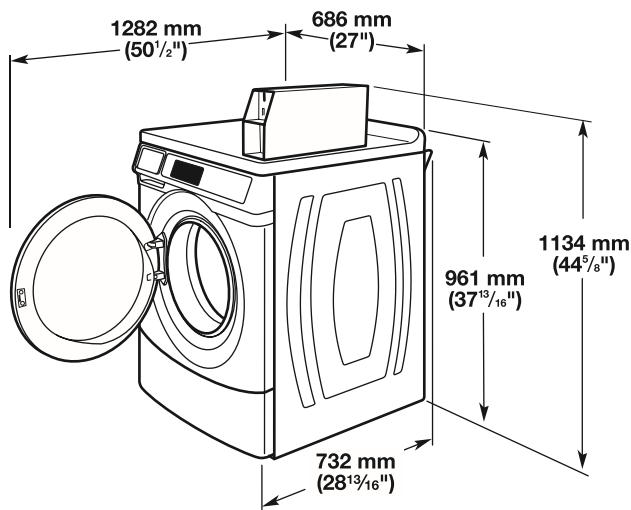
- A water heater set to deliver 49°C (120°F) water to the washer.
- An earthed electrical outlet located within 1.8 m (6 ft.) of where the power cord is attached to the back of the washer. See “Electrical Requirements.”
- Hot and cold water taps located within 1.2 m (4 ft.) of the hot and cold water fill valves and water pressure of 137.9–689.6 kPa (20–100 psi).
- A level floor with a maximum slope of 25 mm (1") under entire washer. Installing the washer on soft floor surfaces, such as carpets or surfaces with foam backing, is not recommended.
- A sturdy and solid floor to support the washer with a total weight (water and load) of 180 kg (400 lbs).

Do not operate your washer in temperatures below 0°C (32°F). Some water can remain in the washer and can cause damage in low temperatures.

Installation clearances

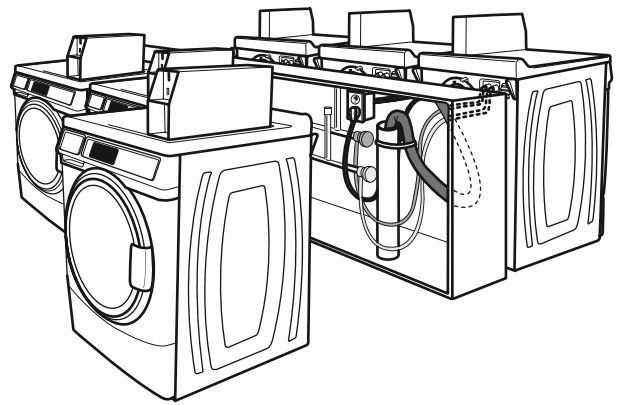
- The location must be large enough to allow the washer door to be fully opened.
- Additional spacing should be considered for ease of installation and servicing. The door opens more than 90° and is not reversible.
- Additional clearances might be required for wall, door, and floor moldings.
- Additional spacing of 25 mm (1") on all sides of the washer is recommended to reduce noise transfer.
- Companion appliance spacing should also be considered.

Washer Dimensions



Door is not reversible

A floor drain should be provided under the bulkhead. Prefabricated bulkheads with electrical outlets, water inlet lines, and drain facilities should be used only where local codes permit.



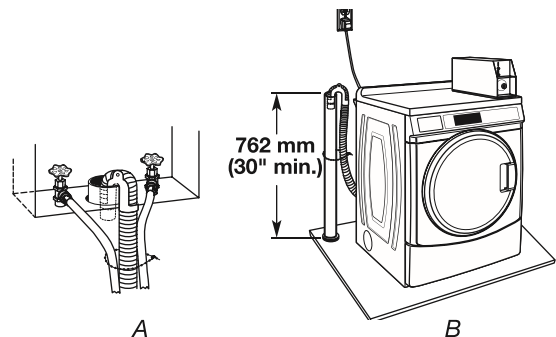
Drain System

The washer can be installed using the standpipe drain system (floor or wall), the laundry tub drain system, or the floor drain system. Select the drain hose installation method you need. See “Tools and Parts.”

Standpipe drain system – wall or floor (views A & B)

The standpipe drain requires a minimum diameter standpipe of 50 mm (2"). The minimum carry-away capacity can be no less than 45.5 L (12 gal.) per minute per washer.

The top of the standpipe must be at least 762 mm (30") high and no higher than 2.4 m (96") from the bottom of the washer.



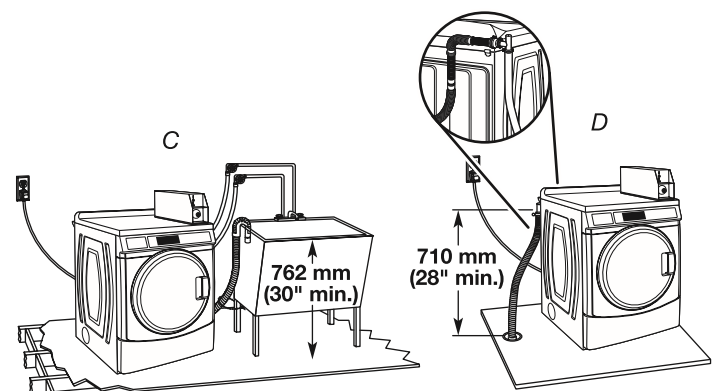
Laundry tub drain system (view C)

The laundry tub needs a minimum 76 L (20 gal.) capacity. The top of the laundry tub must be at least 762 mm (30") above the floor.

Floor drain system (view D)

The floor drain system requires a siphon break that may be purchased separately. See “Tools and Parts.”

The siphon break must be a minimum of 710 mm (28") from the bottom of the washer. Additional hoses might be needed.



Electrical Requirements

WARNING



Dangerous Voltage

WARNING



Electric Shock Hazard

Plug into an earthed socket outlet.

Do not use an adapter.

Do not use an extension cord.

Failure to follow these instructions can result in death, fire, or electric shock.

- A 220–240V, 50 Hz., fused electrical supply is required. A time-delay 10–16A fuse or circuit breaker is recommended.
- This washer is equipped with a power supply cord having a 3 prong earthed plug.
- To minimize possible shock hazard, the cord must be plugged into a mating, 3 prong, grounding-type outlet, grounded in accordance with local codes and ordinances. If a mating outlet is not available, it is the personal responsibility and obligation of the customer to have the properly grounded outlet installed by a qualified electrician.
- If codes permit and a separate ground wire is used, it is recommended that a qualified electrician determine that the earth path is adequate.
- If the supply cord is damaged, it must be replaced by the manufacturer, its service agent, or a qualified person to avoid a hazard.
- Do not earth to a gas pipe.
- Check with a qualified electrician if you are not sure the washer is properly earthed.
- Do not have a fuse in the neutral or earth circuit.

EARTHING INSTRUCTIONS

This washer must be earthed. In the event of a malfunction or breakdown, earthing will reduce the risk of electric shock by providing a path of least resistance for electric current. This washer is equipped with a cord having an equipment-earthing conductor and an earthing plug. The plug must be plugged into an appropriate outlet that is properly installed and earthed in accordance with all local codes and ordinances.

WARNING: Improper connection of the equipment-earthing conductor can result in a risk of electric shock. Check with a qualified electrician or serviceman if you are in doubt as to whether the appliance is properly earthed.

Do not modify the plug provided with the appliance – if it will not fit the outlet, have a proper outlet installed by a qualified electrician.

NOTE: Electrical safety standards: The manufacturer has chosen compliance with IEC/EN.60335 standards as the most appropriate for this product.

- Sound Pressure Level, Lpa: 58 dbA (uncertainty, Kpa: +/-3.6 dbA)

INSTALLATION INSTRUCTIONS

Remove Transport System

⚠ WARNING

Excessive Weight Hazard

Use two or more people to move and install washer.

Failure to do so can result in back or other injury.

Max. packed weight:

PD model: 115 kg (253.53 lb)

PN model: 111 kg (244.71 lb)

Max. unpacked weight:

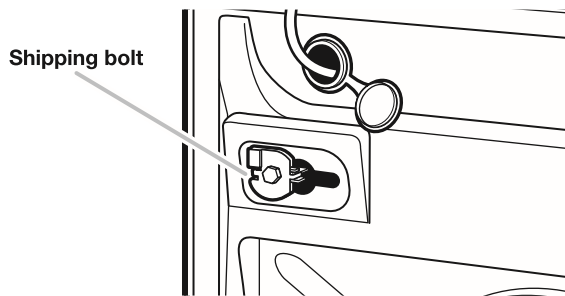
PD model: 111 kg (244.71 lb)

PN model: 107 kg (235.89 lb)

IMPORTANT: Position the washer so that the rear of the washer is within approximately 900 mm (3 ft.) of its final location.

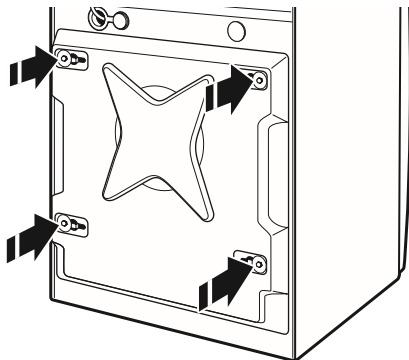
There are 4 shipping bolts in the rear panel of the washer that support the suspension system during transportation. These bolts also retain the power cord inside the washer until the bolts are removed.

1. Keep the washer in the upright position while removing the shipping bolts.

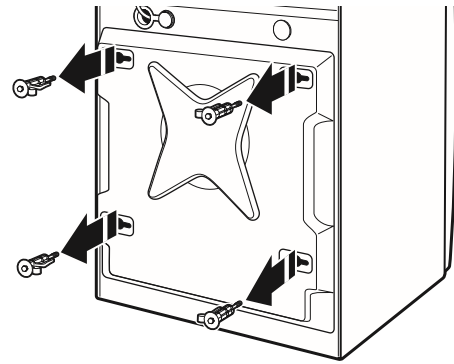


Shipping bolt with plastic spacer

2. Using a 13 mm (1/2") wrench, loosen each of the bolts.



3. Once the bolt is loose, move it to the center of the hole and completely pull out the bolt, including the plastic spacer covering the bolt.



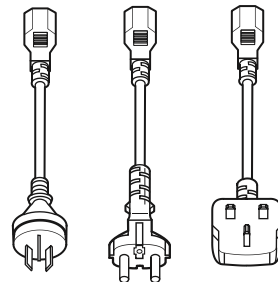
4. Once all 4 bolts are removed, discard the bolts and spacers. Then push the plug back into the back of the washer and pull the power cord through the left opening of the rear panel and close the hole with the attached cap.

5. Close the bolt holes with the 4 transport bolt hole plugs.

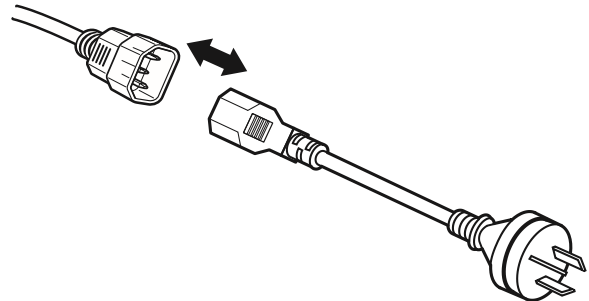
NOTE: If the washer is to be transported at a later date, call your product distributor or installer. To avoid suspension and structural damage, your washer must be properly set up for relocation by a trained professional.

Power Cord Installation

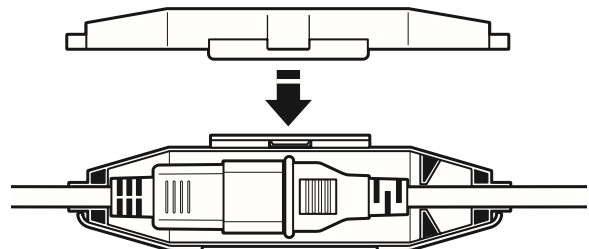
1. Select the plug that fits with the electric receptacle.



2. Assemble the plug into the end of the power cord.



3. Secure the power cord by seating the connection on the cord lock.

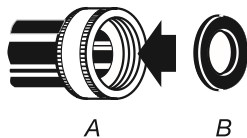


4. Place the cord lock cover and push until it snaps.
5. Make sure the power cord connection is seated on the cord lock and that the cord lock clamps correctly.

Connect the Inlet Hoses

Insert new flat washers (supplied) into each end of the inlet hoses. Firmly seat the washers in the couplings.

NOTE: Use new hoses supplied with the washer. Do not reuse old hoses.

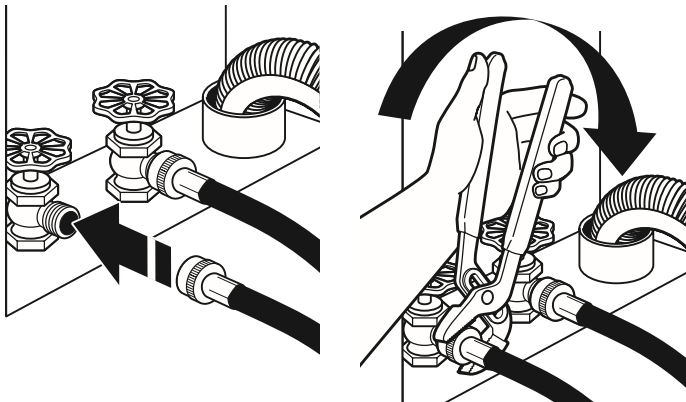


A. Coupling
B. Washer

Connect the inlet hoses to water faucets

Make sure the washer drum is empty.

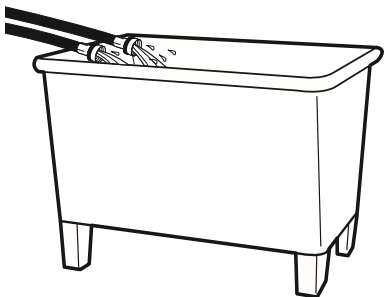
1. Attach a hose to the hot water faucet. Screw on coupling by hand until it is seated on the washer.
2. Attach a hose to the cold water faucet. Screw on coupling by hand until it is seated on the washer.
3. Using pliers, tighten the couplings with an additional two-thirds turn.



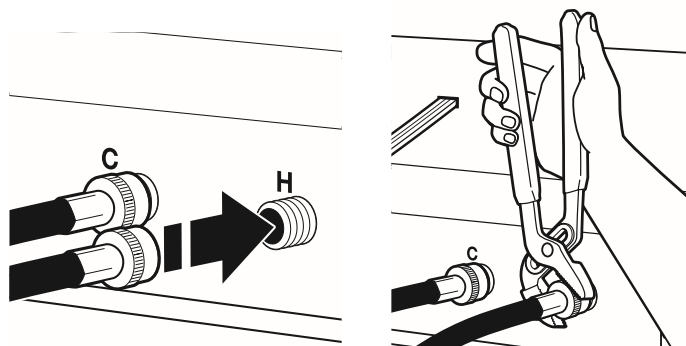
NOTE: Do not overtighten, use tape, or sealants on the valve. Damage to the valves can result.

Clear water lines

- Run water through both faucets and inlet hoses, into a laundry tub, drainpipe, or bucket, to get rid of particles in the water lines that might clog the inlet valve screens.
- Check the temperature of the water to make sure that the hot water hose is connected to the hot water faucet and that the cold water hose is connected to the cold water faucet.



Connect the inlet hoses to the washer



C. Cold water inlet
H. Hot water inlet

1. Attach the hot water hose to the check valve on washer's hot (H) water inlet valve. Screw on coupling by hand until it is seated on the check valve.
 2. Attach the cold water hose to the check valve on washer's cold (C) water inlet valve. Screw on coupling by hand until it is seated on the check valve.
 3. Using pliers, tighten the couplings with an additional two-thirds turn.
- NOTE:** Do not overtighten. Damage to the coupling can result.
4. Turn on the water taps completely and check for leaks.



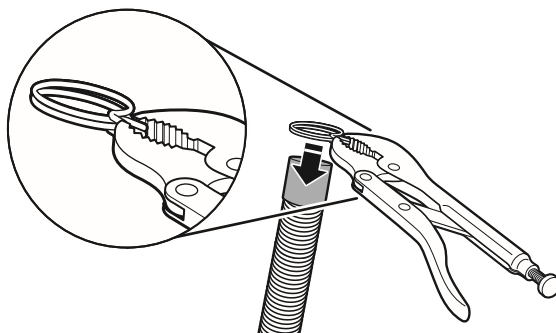
NOTE: Replace inlet hoses after 5 years of use to reduce the risk of hose failure. Record hose installation or replacement dates on the hoses for future reference.

Periodically inspect and replace hoses if bulges, kinks, cuts, wear, or leaks are found.

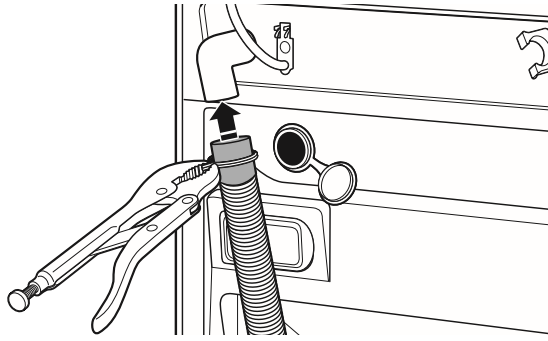
Connect the Drain Hose

Remove drain hose from washer drum

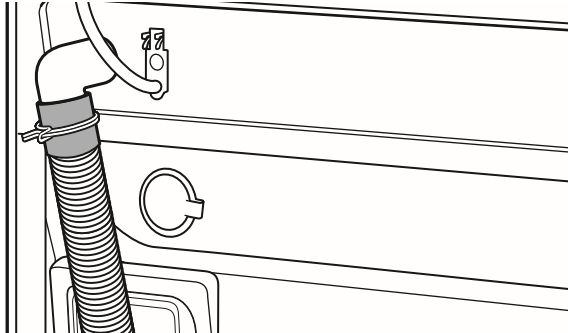
1. Use locking pliers, squeeze hose clamp tabs together and insert over the end of drain hose.



- Slide drain hose onto washer connection.



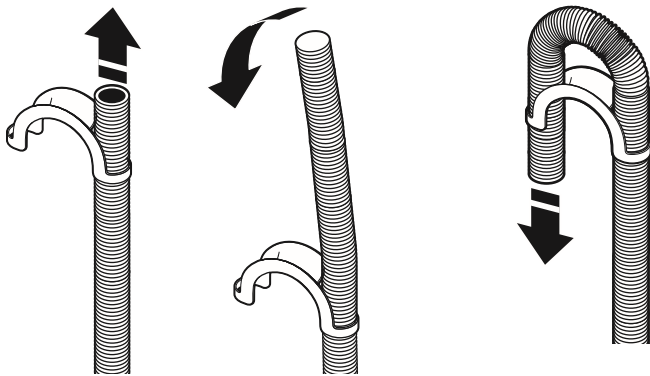
- Once drain hose is in place, release pliers.



Washer drain system can be installed using a floor drain, wall standpipe, floor standpipe, or laundry tub.

Laundry tub drain or standpipe drain

Connect the drain hose form to the corrugated drain hose.



To keep drain water from going back into the washer:

- Use the drain hose form, and do not force excess drain hose into standpipe. Hose should be secure, but loose enough to provide a gap for air.
- Do not lay excess hose on the bottom of the laundry tub.

Floor drain

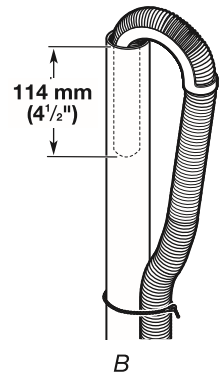
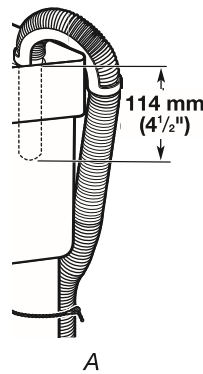
You may need additional parts. See Floor drain under "Tools and Parts."

Secure the Drain Hose

Drain hose must be secured to stop the hose from moving when water is pumped out. If the drain hose moves, water may end up on the floor.

- Drape the power cord over the washer top.
- Move the washer to its final location.

- Place the drain hose in the laundry tub or standpipe as shown. See illustrations A and B.



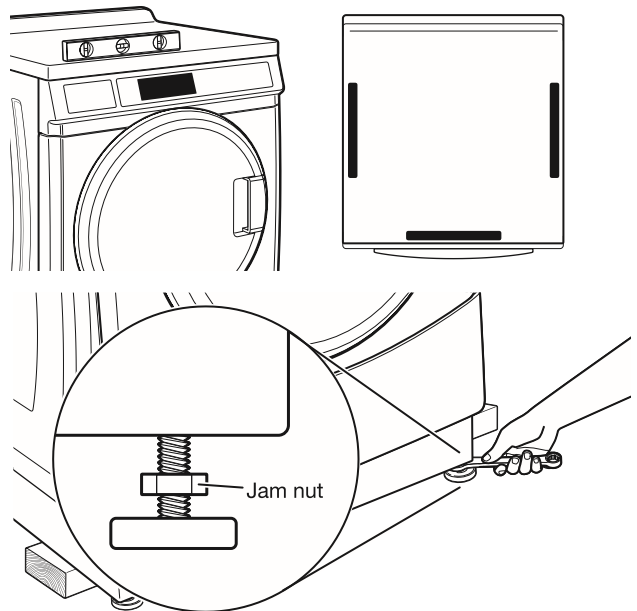
NOTES:

- Do not force excess drain hose back into the rear of the washer.
- To avoid siphoning, do not seal or put more than 114 mm (4 1/2") of the drain hose into drainpipe or standpipe.

Level the Washer

Properly leveling your washer avoids excessive noise and vibration.

- Check the levelness of the washer by placing a level on the top edge of the washer, first side to side, then front to back.



If the washer is against a wall, move the washer out slightly before tipping back. If the washer is not level, first prop the front with a wood block and adjust the feet as necessary. To adjust feet, use a 14 mm or 9/16" open-end or adjustable wrench to turn jam nuts clockwise (as viewed from above) on feet until they are about 13 mm (1/2") from the washer cabinet. Then turn the leveling foot counterclockwise to lower the washer or clockwise to raise the washer. Recheck levelness of washer and that all four feet are firmly in contact with the floor. Repeat as needed.

- Make sure all four feet are stable and resting on the floor. Then check that the washer is perfectly level (use a level).
- When washer is level and all four feet are firmly in contact with the floor, use a 14 mm or 9/16" open-end or adjustable wrench to turn jam nuts counterclockwise (as viewed from above) on leveling feet tightly against washer cabinet.

IMPORTANT: All four feet must be tightened. If the nuts are not tight against the washer cabinet, the washer may vibrate.

4. The washer should not move front to back, side to side, or diagonally when pushed on its top edges.
5. Slide the washer to its final location.
6. Confirm the levelness of the washer.

Payment System Setup

PD Model Washer is coin payment ready and allows the use of two different sizes of coins if a dual drop is installed. To set up the washer for coin payment, acquire a coin drop mechanism with the appropriate coin sensors. Connect coin sensors to the coin slot 1 and 2, respectively.

Complete Installation

1. Check the electrical requirements. Be sure that you have the correct electrical supply and the recommended earthing method. See "Electrical Requirements."
2. Check that all parts are now installed. If there is an extra part, go back through the steps to see which step was skipped.
3. Check that you have all of your tools.
4. Dispose of/recycle all packaging materials.
5. Check that the water taps are on.
6. Check for leaks around taps and inlet hoses.

WARNING



Electric Shock Hazard

Plug into an earthed socket outlet.

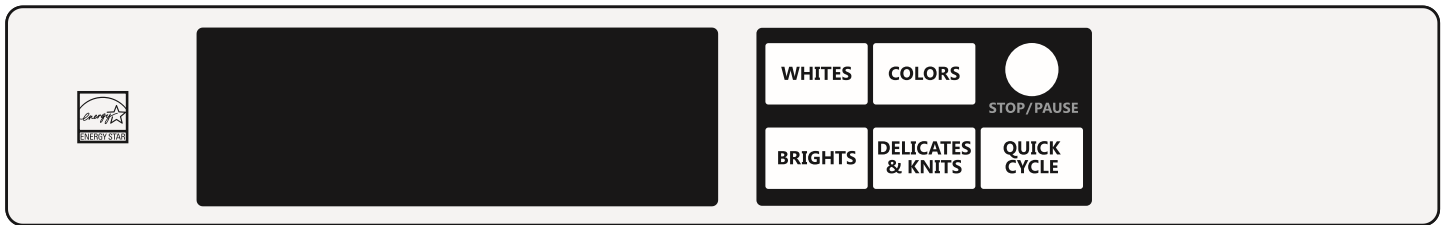
Do not use an adapter.

Do not use an extension cord.

Failure to follow these instructions can result in death, fire, or electric shock.

7. Plug into an earthed socket outlet.
8. To test and to clean your washer, measure 1/2 the detergent manufacturer's recommended amount for a medium-size load. Pour the detergent into the detergent dispenser. Select any cycle and allow the washer to complete one whole cycle.

USER & SETUP INSTRUCTIONS



1. Door must be closed before cycle selection is made.
2. Press fabric setting keypad for the wash cycle desired. After the cycle is started, the time will display and count down.

General User Information

Scrolling 'out of order' showing in display, followed by a failure code

This condition indicates the washer is inoperative.

'0 Minutes' showing in display

This condition indicates the washer cannot be operated. Coins dropped or debit inputs during this condition will be stored in escrow but cannot be used until normal operation is restored by opening and closing the door. If a door switch fails, it must be replaced before normal operation can be restored.

Cold Start (Initial first use)

Washer is programmed at the factory as follows:

- 11-minute wash period
- 3 rinses (extra rinse not enabled)
- 7 x coin 1 wash price (PD models)

Warm Start (after power failure)

A few seconds after power is restored, if a cycle was in progress at the time of the power failure, 'RESELECT CYCLE' will flash in the display, indicating the need for a keypad press to restart washer.

Door Lock

The door will be locked when the cycle starts. The door will remain locked until the end of a cycle or approximately 2 minutes after a power interruption.

Pricing

After the door is opened following the completion of a cycle, the display indicates the cycle price (unless set for free operation). As coins are dropped or debit inputs arrive, the display will change to lead the user through the initiation of a cycle.

Free Cycles

This is established by setting the cycle price to zero. When this happens, 'SELECT CYCLE' will appear rather than a cycle price.

Display

After the washer has been installed and plugged in, the display will show "0 MINUTES." Once the washer has been plugged in and the washer door opened and closed, the display will show the price. In washers set for free cycles, the display will flash "SELECT CYCLE."



NOTE: Not displayed on washer as shown. Message scrolls followed by the failure code.



Control Setup Procedures

IMPORTANT: Read all instructions before operating.

- PD Models: Insert access door key, turn, and lift to remove access door.

Setup procedures can be entered by using the Service Access Code (see Service Access Code section) for PN washers set up without a key switch installed.

The washer is now in the setup mode. The lower fabric setting keypads and the digital display are used to set up the controls. The display can contain 4 numbers and/or letters and a decimal point. These are used to indicate the setup codes and related code values available for use in programming the washer.

Once the washer has been programmed with a hand-held device using Accu Trac, or a Gen. 2 card reader has been installed, the washer will be put into dAS mode permanently, and dAS will be displayed every time setup mode is accessed.

How to use the keypads to program controls

1. The BRIGHTS keypad is used to adjust the values associated with setup codes. Pressing this keypad will change the value by increments. Rapid adjustment is possible by holding the keypad down.
2. The DELICATES AND KNITS keypad advances you through the setup codes. Pressing this keypad will advance you to the next available setup code. Holding the keypad down will automatically advance through the setup codes at a rate of 1 per second.

3. The QUICK CYCLE keypad is used to select or deselect options.

Start Operating Setup

NOTE: Prior to operation, a payment system or an OPL kit must be installed on PD models as part of the setup.

Before proceeding, it is worth noting that, despite all of the options available, an owner can simply choose to uncrate a new commercial washer, hook it up, plug it in, and have a washer that operates. Washers are preset at the factory for an 11-minute wash period and 3 rinses (no extra rinse).

Setup Codes

- The DELICATES AND KNITS keypad will advance you from code to code.
- The BRIGHTS keypad will change the code value.
- The QUICK CYCLE keypad will select or deselect options.

FOR PN MODELS: The setup codes are the same as for the "PD" model except where noted.

The setup code is indicated by the one or two left-hand characters. The setup code value is indicated by the two or three right-hand characters. The first code shown in each section is the Factory Default setting.

CODE	EXPLANATION
6 07	REGULAR CYCLE PRICE (Factory Default)
6 07	Represents the number of coins (Coin 1) needed to start the washer; may adjust from 0–39. (See VALUE OF COIN 1.) Advance from 0–39 by pressing BRIGHTS keypad. Factory default of 7 x coin 1. With coin slide activation, this code represents the number of push-in actuations of a coin slide to start the washer. 6 01 setting would represent one coin slide actuation. NOTE: For coin slide activation, replacement of the meter case is necessary.
6 00	PN MODELS ONLY: Factory default of 0 coins. → Press the DELICATES AND KNITS keypad once to advance to next code.
7 11	WASH LENGTH
7 11	This is the number of minutes for WASH. Washer comes from the factory preset with 11 minutes. Choose from 9–17 minutes by pressing the BRIGHTS keypad. → Press the DELICATES AND KNITS keypad once to advance to next code. NOTE: This option does not apply to QUICK CYCLE.
8 00	ADDITIONAL RINSE OPTION This option is either SELECTED 'ON' or NOT SELECTED 'OFF'.
8 00	Not Selected 'OFF'.
8 Ar	Selected 'ON'. Cannot be combined with the Super Cycle rinse option. Press the QUICK CYCLE keypad once for this selection. → Press the DELICATES AND KNITS keypad once to advance to next code.

CODE	EXPLANATION
9 00	CYCLE COUNTER OPTION This option is either SELECTED 'ON' or NOT SELECTED 'OFF'.
9 00	Not Selected 'OFF'.
9 0C	Selected 'ON' and not able to be deselected. Press the QUICK CYCLE keypad 3 consecutive times to select 'ON'. Once selected 'ON' it cannot be deselected. → Press the DELICATES AND KNITS keypad once to advance to next code.
1. 00	MONEY COUNTER OPTION This option is either SELECTED 'ON' or NOT SELECTED 'OFF'.
1. 00	Not Selected 'OFF'.
1. 0C	Selected 'ON'. Press the QUICK CYCLE keypad 3 consecutive times to select 'ON' and 3 consecutive times to remove (Not Selected 'OFF'.) Counter resets by going from 'OFF' to 'ON'. → Press the DELICATES AND KNITS keypad once to advance to next code.
1. C0	Selected 'ON' and not able to be deselected. To select 'ON' and not able to be deselected, first select 'ON', then within 2 seconds, press the QUICK CYCLE twice, BRIGHTS once, and exit the setup mode.
2. 00	SPECIAL PRICING OPTIONS This option is either SELECTED 'ON' or NOT SELECTED 'OFF'.
2. 00	Not Selected 'OFF', and next available code will be A.00.
2. SP	Selected 'ON'. Press the QUICK CYCLE keypad once for this selection.

If SPECIAL PRICING OPTION is selected, there is access to codes '3.XX' through '9.XX'.

- Press the DELICATES AND KNITS keypad once to advance to next code.

Options to use if SPECIAL PRICING is selected:	
3. 07	SPECIAL CYCLE PRICE
3. 07	Represents the number of coins (coin 1) needed to start the washer; may adjust from 0–39. (See VALUE OF COIN 1.) Advance from 0–39 by pressing the BRIGHTS keypad. Factory default of 7 x coin 1.
3. 00	PN MODELS ONLY: Factory default of 0 coins. → Press the DELICATES AND KNITS keypad once to advance to next code.
5. 00	TIME-OF-DAY CLOCK, MINUTES
5. 00	This is the TIME-OF-DAY CLOCK, minute setting; select 0–59 minutes by pressing the BRIGHTS keypad. → Press the DELICATES AND KNITS keypad once to advance to next code.
6. 00	TIME-OF-DAY CLOCK, HOURS NOTE: Uses the 24-hr. clock
6. 00	This is the TIME-OF-DAY CLOCK, hour setting; select 0–23 hours by pressing the BRIGHTS keypad. → Press the DELICATES AND KNITS keypad once to advance to next code.

CODE	EXPLANATION																								
7. 00	SPECIAL PRICE START HOUR NOTE: Uses the 24-hr. clock																								
7. 00	This is the start hour; 0–23 hours. Select START HOUR by pressing the BRIGHTS keypad. → Press the DELICATES AND KNITS keypad once to advance to next code.																								
8. 00	SPECIAL PRICE STOP HOUR NOTE: Uses the 24-hr. clock																								
8. 00	This is the stop hour; 0–23 hours. Select STOP HOUR by pressing the BRIGHTS keypad. → Press the DELICATES AND KNITS keypad once to advance to next code.																								
9. 10	SPECIAL PRICE DAY																								
9. 10	This represents the day of the week and whether special pricing is selected for that day. A number followed by ‘0’ indicates no selection that particular day (9.10). A number followed by an ‘S’ indicates selected for that day (9.1S). To change the value of ‘0’ and ‘S’, use the QUICK CYCLE keypad. Days of the week (1–7) are selected by pressing the BRIGHTS keypad. When exiting setup code ‘9’, the display must show current day of week: <table><tr><th>DISPLAY</th><th>DAY OF WEEK</th><th>CODE (selected)</th></tr><tr><td>10</td><td>Day 1 = Sunday</td><td>1S</td></tr><tr><td>20</td><td>Day 2 = Monday</td><td>2S</td></tr><tr><td>30</td><td>Day 3 = Tuesday</td><td>3S</td></tr><tr><td>40</td><td>Day 4 = Wednesday</td><td>4S</td></tr><tr><td>50</td><td>Day 5 = Thursday</td><td>5S</td></tr><tr><td>60</td><td>Day 6 = Friday</td><td>6S</td></tr><tr><td>70</td><td>Day 7 = Saturday</td><td>7S</td></tr></table> → Press the DELICATES AND KNITS keypad once to advance to next code.	DISPLAY	DAY OF WEEK	CODE (selected)	10	Day 1 = Sunday	1S	20	Day 2 = Monday	2S	30	Day 3 = Tuesday	3S	40	Day 4 = Wednesday	4S	50	Day 5 = Thursday	5S	60	Day 6 = Friday	6S	70	Day 7 = Saturday	7S
DISPLAY	DAY OF WEEK	CODE (selected)																							
10	Day 1 = Sunday	1S																							
20	Day 2 = Monday	2S																							
30	Day 3 = Tuesday	3S																							
40	Day 4 = Wednesday	4S																							
50	Day 5 = Thursday	5S																							
60	Day 6 = Friday	6S																							
70	Day 7 = Saturday	7S																							
A. 00	VAULT VIEWING OPTION This option is either SELECTED ‘ON’ or NOT SELECTED ‘OFF’.																								
A. 00	Not Selected ‘OFF’.																								
A. SC	Selected ‘ON’. Press the QUICK CYCLE keypad once for this selection. When selected, the money and/or cycle counts will be viewable (if counting is selected) when the coin box is removed. → Press the DELICATES AND KNITS keypad once to advance to next code.																								
b. 05	VALUE OF COIN 1																								
b. 05	This represents the value of coin 1 in the quantity of 5% increments of the larger coin value. 5 x 5%=25%. By pressing the BRIGHTS keypad, there is the option of 1–199 for the quantity of 5% increments. With coin slide activation, this represents the total vend price. NOTE: For coin slide activation, replacement of the meter case is necessary. → Press the DELICATES AND KNITS keypad once to advance to next code.																								

CODE	EXPLANATION
C. 20	VALUE OF COIN 2
C. 20	This represents the value of coin 2 in the quantity of 5% increments of the larger coin value. 20 x 5%=100%. By pressing the BRIGHTS keypad, there is the option of 1–199 for the quantity of 5% increments.
C. 05	PN MODELS: This represents the value of coin 2 in the quantity of 5% increments of the larger coin value. Factory default = 5 x 5% of the larger coin value. → Press the DELICATES AND KNITS keypad once to advance to next code.
d. 00	COIN SLIDE OPTION This option is either SELECTED 'ON' or NOT SELECTED 'OFF'.
d. 00	Not Selected 'OFF'. Used with coin drop or card readers.
d. CS	Selected 'ON'. Press the QUICK CYCLE keypad 3 consecutive times for this selection. NOTE: This option needs to be set to "00" unless the meter case has been changed to accept a coin slide device. When coin slide mode is selected 'On', set b. equal to value of vend price. Set setup code 6 (regular cycle price) and setup code 3 (special cycle price) to number of slide pushes. If washer is set up as "CS" and a coin drop is installed, it will not register coins. NOTE: For coin slide activation, replacement of the meter case is necessary. → Press the DELICATES AND KNITS keypad once to advance to next code.
E. 00	ADD COINS OPTION This option is either SELECTED 'ON' or NOT SELECTED 'OFF'. This option causes the customer display to show the number of coins (coin 1) to enter, rather than the amount.
E. 00	Not Selected 'OFF'.
E. AC	Selected 'ON'. Press the QUICK CYCLE keypad 3 consecutive times for this selection. → Press the DELICATES AND KNITS keypad once to advance to next code.
F. 00	ENHANCED PRICING OPTION
F. 00	Not Selected 'OFF'.
F. CP	Cycle-Based pricing enabled. This option allows configuration of different prices for cold, warm, and hot water cycles.
F. Su	Super Cycle pricing enabled. This option allows customers to upgrade cycles by depositing extra money. Setup codes "H." and "h." will be displayed only when this option is enabled. Press the QUICK CYCLE keypad once for this selection. → Press the DELICATES AND KNITS keypad once to advance to next code.
H. 01	SUPER CYCLE UPGRADE PRICE (Skipped unless super cycle pricing is enabled.)
H. 01	This represents the number of coin 1 required to upgrade a base cycle to a super cycle. Advance from 0–39 by pressing the BRIGHTS keypad. → Press the DELICATES AND KNITS keypad once to advance to next code.

CODE	EXPLANATION
h. 01	SUPER CYCLE TYPE (Skipped unless Super Cycle pricing is enabled.)
h. 01	This represents the Super Cycle upgrade option. Press the BRIGHTS keypad to step through upgrade options 1–3 as follows: 01 – enhanced wash, extra 3 minutes of wash tumble in addition to the programmed wash time. 02 – extra rinse for all cycles. 03 – both 01 and 02. → Press the DELICATES AND KNITS keypad once to advance to next code.
J. Cd	COIN/DEBIT OPTION
J. Cd	Both coin & debit selected. Press the QUICK CYCLE keypad 3 consecutive times to change this selection.
J. C_	Coins selected, debit disabled. Press the QUICK CYCLE keypad 3 consecutive times to change this selection.
J. _d	Debit card selected, coins disabled. This is the factory default for PN models. Press the QUICK CYCLE keypad 3 consecutive times to change this selection.
J. Ed	Enhanced Debit is self-selected when a Generation 2 card reader is installed in the washer. The Ed option cannot be manually selected or deselected. → Press the DELICATES AND KNITS keypad once to advance to next code.
L. 00	PRICE SUPPRESSION OPTION This option causes the customer display to show 'ADD' or 'AVAILABLE' rather than the amount of money to add. (Used mainly in debit installations.)
L. 00	Not Selected 'OFF.'
L. PS	Selected 'ON.' Press the QUICK CYCLE keypad once for this selection. → Press the DELICATES AND KNITS keypad once to advance to next code.
n. CE	CLEAR ESCROW OPTION When selected, money held in escrow for 30 minutes without further escrow or cycle activity will be cleared.
00	Not Selected 'OFF'.
CE	Selected 'ON'. Press the QUICK CYCLE keypad once for this selection. → Press the DELICATES AND KNITS keypad once to advance to next code.
r. 800	TOP SPIN SPEED RPM
r. 800	This can be selected from the following spin speeds: 600 rpm, 750 rpm, 800 rpm, 1000 (displays as 999) rpm. Step between speeds by pressing the BRIGHTS keypad. Factory pre-set for 800 rpm. → Press the DELICATES AND KNITS keypad once to advance to next code.
U. 00	PENNY INCREMENT OFFSET
U. 00	This option is not supported for European Models and the value must be set to 00. → Press the DELICATES AND KNITS keypad once to advance to next code.

CODE	EXPLANATION
A1. 00	PREWASH LENGTH
A1. 00	This is the number of minutes of PREWASH. Choose 0 to disable the prewash or select between 2 and 7 minutes by pressing the BRIGHTS keypad. → Press the DELICATES AND KNITS keypad once to advance to next code.
A2. 03	FINAL SPIN LENGTH
A2. 03	This is the number of minutes of final high-speed spin. Choose from 3–8 minutes by pressing the BRIGHTS keypad. → Press the DELICATES AND KNITS keypad once to advance to next code.

If cycle counter (9 0C) is selected, the following is true:

1 00	Number of cycles in HUNDREDS.	1 <u>02</u> = 200
2 00	Number of cycles in ONES.	2 <u>25</u> = 25
		TOTAL CYCLES = 225

This is 'VIEW ONLY' and cannot be cleared.

→ Press the DELICATES AND KNITS keypad once to advance to next code.

If money counter (1.0C or 1.C0) is selected, the following is true:

3 00	Currency amount in HUNDREDS.	3 <u>01</u> = 100.00
4 00	Currency amount in ONES.	4 <u>68</u> = 68.00
5 00	Currency amount in HUNDREDTHS.	5 <u>75</u> = 00.75
		TOTAL = 168.75

END OF SETUP PROCEDURES

EXIT FROM SETUP MODE

- PD Models: Reinstall access door.
- PN Models:
 - Unplug washer or disconnect power.
 - Open console, reinsert plug into AA1, close console.
 - Plug in washer or reconnect power.
- PN MODELS WITH PROGRAMMING SWITCH:
Turn key clockwise and remove.
- PN MODELS SET UP WITHOUT PROGRAMMING SWITCH:
Setup mode can be exited by using procedures from Service Access Code (Below).

SERVICE ACCESS CODE

This code can be entered to access service mode without removing the console. It only functions on washers set up for 0 vend price without any Special Pricing setup, and the Coin/Debit Option must be set to "J._d". If the washer is not in failure mode, the door must be opened to proceed.

To enter the Service Access Code, press these keypads in the following order: 1–upper left, 2–lower right, 3–upper right, 4–lower left.

NOTE: If the Service Access Code procedure is not completed properly, as noted above, there is a 15-second delay before it can be attempted again.

There are 3 options to exit from the Service Mode:

1. Power down the washer; then reapply power.
2. Wait 2 minutes without touching any keypads (without diagnostic modes running).
3. From Setup Code 8, press keypad #1 for 4 seconds.

Washer Diagnostic Modes

To enter the "Washer Diagnostic Mode," first enter "Start Operating Setup." Then press and hold the QUICK CYCLE keypad for 1 second while in setup code 6, anytime a diagnostic code is present, or while dAS displays if operating with Maytag Data Acquisition setup.

On entry to diagnostic mode the entire display will flash, a cycle in process is canceled, money in escrow is cleared, and diagnostic codes are cleared. If a diagnostic code persists, it must be corrected before the following cycle options are permitted.

There are five possible ways to initiate cycle activity from diagnostic mode as follows:

1. **Washer Cleanout cycle** – With the entire display flashing, this cycle is started by pressing the STOP/PAUSE keypad.
Use the Washer Cleanout cycle once a month to keep the inside of your washer fresh and clean. This cycle uses a higher water level. Use with liquid chlorine bleach to thoroughly clean the inside of the washer. This cycle should not be interrupted.
IMPORTANT: Do not place garments or other items in the washer during the Washer Cleanout cycle. Use this cycle with an empty wash drum.
2. **Cycle Credit** – With the entire display flashing, a cycle may be credited by pressing the BRIGHTS keypad (CC will display). When the service mode is exited, "SELECT CYCLE" will be displayed unless the end-of-cycle door opening is required.
3. **Manual Overview Test** – With the entire display flashing, this cycle is started by pressing the WHITES keypad. This cycle provides more typical full length fills, tumbles, drains, and dispenser actuator movement, allowing for a more thorough analysis of the washer operation, including pressure switch behavior.
4. **Quick Spin Cycle** – With the entire display flashing, this cycle is started by pressing the COLORS keypad. This cycle provides a method to quickly drain and spin (remove water from the washer) if desired.
5. **Quick Overview Test** – With the entire display flashing, this cycle is started by pressing the DELICATES AND KNITS keypad. This cycle provides a quick verification that the cold and hot water valves, dispensers, and pump motor are working, as well as dispenser actuator movement. It also includes door lock, drain, and spin operations.

Pressing the QUICK CYCLE keypad will exit diagnostic mode and cancel a diagnostic cycle in process.

DIAGNOSTIC CODES

If one of the following has occurred, the appropriate diagnostic code will be in the display.

d5	Blocked coin 1 or coin drop control circuit failure (coin recognition and price display disabled while blockage persists). PN Models Only: Setup mode J. should be set to _d to eliminate coin related diagnostic codes.
d9	Low voltage detected for 8 seconds.
d13	Blocked coin 2 or coin drop control circuit failure (coin recognition and price display disabled while blockage persists).
F20	Slow Fill. The washer will not detect water input for 4 min. Pressure switch failure or no water inlet. This code is reported as d8 on d7.
F22	The door is not able to lock. Door lock error or someone trying to start the washer, by pressing the door switch with the finger. This code is reported as d17 on Accu Trac.

(For any other codes, check supplied Technical Sheet)

SERVICE ACCESS CODE

This code can be entered to access service mode without removing the console. It only functions on washers set up for 0 vend price without any Special Pricing setup, and the Coin/Debit Option must be set to "J._d". If the washer is not in failure mode, the door must be opened to proceed.

To enter the Service Access Code, press these keypads in the following order: 1–upper left, 2–lower right, 3–upper right, 4–lower left.

NOTE: If the Service Access Code procedure is not completed properly, as noted above, there is a 15-second delay before it can be attempted again.

There are 3 options to exit from the Service Mode:

1. Power down the washer; then reapply power.
2. Wait 2 minutes without touching any keypads (without diagnostic modes running).
3. From Setup Code 8, press keypad #1 for 4 seconds.

WASHER HELP MODE

This mode is entered by pressing the BRIGHTS keypad while in special pricing option mode 2.XX (or while dAS displays if operating with Maytag Data Acquisition setup).

In help mode, other display symbols and elements are mapped to reflect the state of various inputs and outputs as follows:

Display Symbol	Description
Wash	Water sensed at wash level.
*	Low voltage present (below about 90 VAC).
° (Circle above digit)	Door closed.
DOOR LOCKED	Door sensed locked.
COLD	Cold water relay on.
HOT	Hot water relay on.
OR	Door unlocked.
AVAILABLE	Drain pump on.

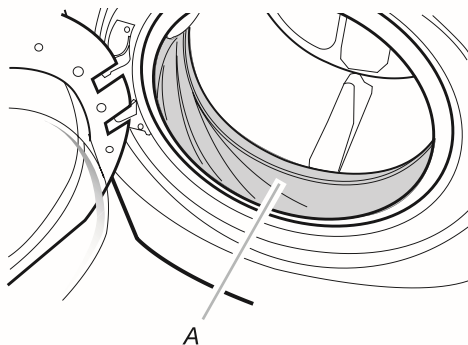
NOTE: A Technical Sheet is taped to inside of lower front panel, which includes fault codes and a washer schematic diagram.

WASHER CARE

Cleaning Your Washer

Cleaning the Door Seal/Bellow

1. Open the washer door and remove any clothing or items from the washer.
2. Inspect the colored seal/bellow between the door opening and the drum for stained areas. Pull back the seal/bellow to inspect all areas under the seal/bellow and to check for foreign objects.



A. Seal/Bellow

3. If stained areas are found, wipe down these areas of the seal/bellow, using the procedure that follows.
 - a) Mix a dilute solution, using 177 mL (3/4 cup) of liquid chlorine bleach, and 3.8 L (1 gal.) of warm tap water.
 - b) Wipe the seal/bellow area with the dilute solution, using a damp cloth.
 - c) Let stand 5 minutes.
 - d) Wipe down area thoroughly with a dry cloth and let the washer interior air dry with door open.

IMPORTANT:

- Wear rubber gloves when cleaning for prolonged periods.
- Refer to the bleach manufacturer's instructions for proper use.

Washer Maintenance Procedure

This washer has a special cycle that uses higher water volumes in combination with liquid chlorine bleach to thoroughly clean the inside of the washer.

NOTES:

- Read these instructions completely before beginning the cleaning process.
- If necessary, the cleaning cycle may be interrupted by pressing the QUICK CYCLE keypad twice. However, this will not immediately stop the cycle. The washer will continue with several rinse and drain steps to ensure that all remaining bleach is rinsed from the washer.

Begin procedure

1. Open the washer door and remove any clothing or items from the washer.
2. **Use liquid chlorine bleach:**
Open the dispenser drawer and immediately add 160 mL (2/3 cup) of liquid chlorine bleach to the bleach compartment.
NOTE: Do not add any detergent to this cycle. Use of more than 160 mL (2/3 cup) of bleach will cause product damage over time.
3. Close the washer door and the dispenser drawer.

4. To start the Clean Washer cycle, first enter "Start Operating Setup." Then press and hold QUICK CYCLE for 1 second. With the entire display flashing, press STOP/PAUSE.

NOTE: The door will lock and the drum will rotate; then the door will unlock, lock again, and then the cycle will continue.

- The washer will not fill, but the drum will rotate while the washer runs a short sensing cycle. This will take approximately 3 minutes.
5. The cycle will determine whether clothing or other items are in the washer.
 - a) If no items are detected in the washer, it will proceed to Step 7.
 - b) If any items are detected in the washer, "rL" or "F-34" will be displayed. Then the door will unlock.
 - Press QUICK CYCLE to cancel the failure code. Then repeat steps 1, 3, and 4 to start the cycle again.
 6. Once the cycle has begun, allow the cycle to complete.
 7. After the cycle is complete, leave the door open slightly, to allow for better ventilation and drying of washer interior.

Always do the following to maintain washer freshness

- Use only "HE" High Efficiency detergent.
- Leave the door slightly open after each cycle to allow for better ventilation and drying of washer interior.
- Clean the washer monthly using the Washer Maintenance Procedure, and 160 mL (2/3 cup) of liquid chlorine bleach.
- If the procedure does not sufficiently improve the washer freshness, please evaluate your installation and usage conditions for other causes.

Cleaning the exterior

Use a soft, damp cloth or sponge to wipe up any spills. Occasionally wipe the outside of your washer to keep it looking new. Use mild soap and water. Do not use abrasive products.

Cleaning the dispenser drawer

The dispenser drawer is removable for easy cleaning.

1. Unlock the dispenser drawer by pressing the Release Lever. Remove the drawer.
2. Remove the inserts (the siphon from the softener and bleach compartments).
3. Wash the parts under running water.
NOTE: Do not wash components in the dishwasher.
4. Replace the inserts and return the dispenser to the drawer.

Water Inlet Hoses

Replace water inlet hoses after 5 years of use to reduce the risk of hose failure. Periodically inspect and replace water inlet hoses if bulges, kinks, cuts, wear, or leaks are found.

When replacing your water inlet hoses, mark the date of replacement on the label with a permanent marker.

ASSISTANCE OR SERVICE

Direct all requests for service to the Maytag Commercial Laundry Distributor that sold the appliance.

When calling, please know the purchase date and the complete model and serial number of your appliance. This information will help us to better respond to your request.

Accessories

Enhance your washer with these premium accessories.

For more high-quality items or to order, contact your authorized Maytag distributor.

Part Number	Accessory
8212526	Washer drip trays, fits under all
31682	All purpose appliance cleaner
1903WH	Laundry supply storage cart
285320	Anti Syphon

Whirlpool Corporation, Benton Harbor, Michigan 49022, USA.
Manufacturer site: Whirlpool Corporation, 119 Birdseye St., Clyde, OH 43410.
EU representative: Whirlpool Europe s.r.l., Viale Guido Borghi 27, 21025 Comerio (VA), Italy.

MAYTAG® COMMERCIAL WASHER, DRYER, STACKED DRYER/ DRYER, COMMERCIAL STACK LAUNDRY, AND MULTI-LOAD COIN OPERATED COMMERCIAL WASHERS AND DRYERS WARRANTY

LIMITED WARRANTY ON PARTS

For the first five years from the date of purchase, when this commercial appliance is installed, maintained and operated according to instructions attached to or furnished with the product, Maytag brand of Whirlpool Corporation (hereafter "Maytag") will pay for factory specified parts or original equipment manufacturer parts to correct defects in materials or workmanship. Proof of original purchase date is required to obtain service under this warranty.

ITEMS MAYTAG WILL NOT PAY FOR

1. All other costs including labor, transportation, or custom duties.
2. Service calls to correct the installation of your commercial appliance, to instruct you how to use your commercial appliance, to replace or repair fuses, or to correct external wiring or plumbing.
3. Repairs when your commercial appliance is used for other than normal, commercial use.
4. Damage resulting from improper handling of product during delivery, theft, accident, alteration, misuse, abuse, fire, flood, acts of God, improper installation, installation not in accordance with local electrical or plumbing codes, or use of products not approved by Maytag.
5. Pickup and Delivery. This commercial appliance is designed to be repaired on location.
6. Repairs to parts or systems resulting from unauthorized modifications made to the commercial appliance.
7. The removal and reinstallation of your commercial appliance if it is installed in an inaccessible location or is not installed in accordance with published installation instructions.
8. Chemical damage is excluded from all warranty coverage.
9. Changes to the building, room, or location needed in order to make the commercial appliance operate correctly.
10. Repairs made by a non-Whirlpool authorized service technician.

DISCLAIMER OF IMPLIED WARRANTIES; LIMITATIONS OF REMEDIES

CUSTOMER'S SOLE AND EXCLUSIVE REMEDY UNDER THIS LIMITED WARRANTY SHALL BE PRODUCT REPAIR AS PROVIDED HEREIN. IMPLIED WARRANTIES, INCLUDING WARRANTIES OF MERCHANTABILITY OR FITNESS FOR A PARTICULAR PURPOSE, ARE LIMITED TO ONE YEAR OR THE SHORTEST PERIOD ALLOWED BY LAW. WHIRLPOOL SHALL NOT BE LIABLE FOR INCIDENTAL OR CONSEQUENTIAL DAMAGES. SOME STATES AND PROVINCES DO NOT ALLOW THE EXCLUSION OR LIMITATION OF INCIDENTAL OR CONSEQUENTIAL DAMAGES, OR LIMITATIONS ON THE DURATION OF IMPLIED WARRANTIES OF MERCHANTABILITY OR FITNESS, SO THESE EXCLUSIONS OR LIMITATIONS MAY NOT APPLY TO YOU. THIS WARRANTY GIVES YOU SPECIFIC LEGAL RIGHTS AND YOU MAY ALSO HAVE OTHER RIGHTS, WHICH VARY FROM STATE TO STATE OR PROVINCE TO PROVINCE.

If you need service, please contact your authorized Maytag® Commercial Laundry distributor. To locate your authorized Maytag® Commercial Laundry distributor, or for web inquiries, visit www.MaytagCommercialLaundry.com.

1/11

For written correspondence:
Maytag® Commercial Laundry Service Department
2000 M-63 North
Benton Harbor, Michigan 49022 USA

NOTES
