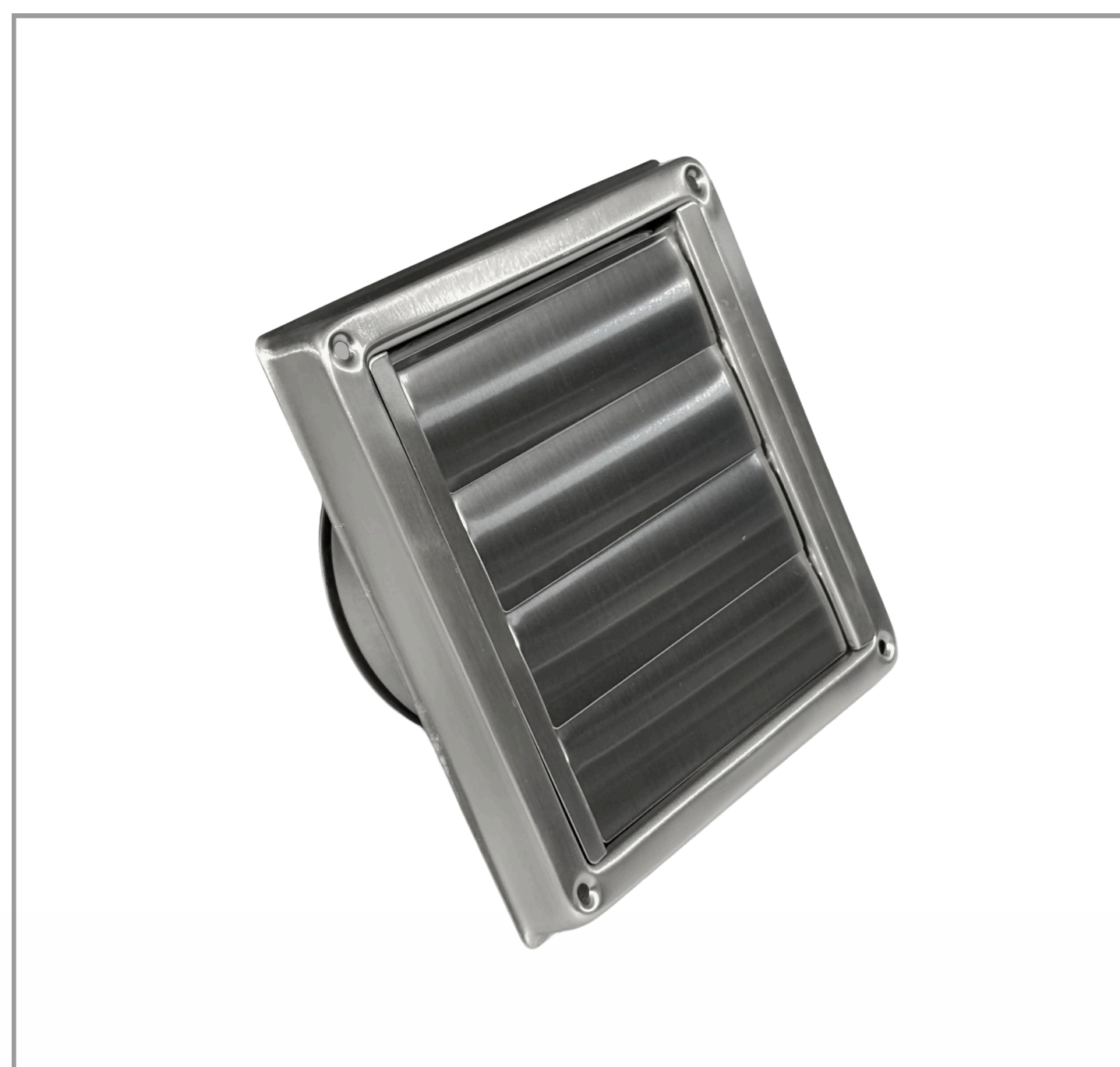


FLUING & DUCTING ACCESSORIES FOR MAYTAG COMMERCIAL DRYERS



100mm THROUGH WALL KIT (STAINLESS STEEL)

Part Number: DVS1SS



GRAVITY VENT - MARINE GRADE STAINLESS STEEL 100mm

Part Number: GVSS100



FLEXIBLE DUCTING* 100mm x 2.4m

Part Number: AO48MX/9



DRAFT BLOCKER 100mm

Part Number: DBV100



DRYER VENT CLEANING BRUSH

Part Number: DVBRUSH8



INTERNAL SIDE FLU KIT - TO CHANGE DRYER VENTING

Part Number: W10470674



RIGID BEND

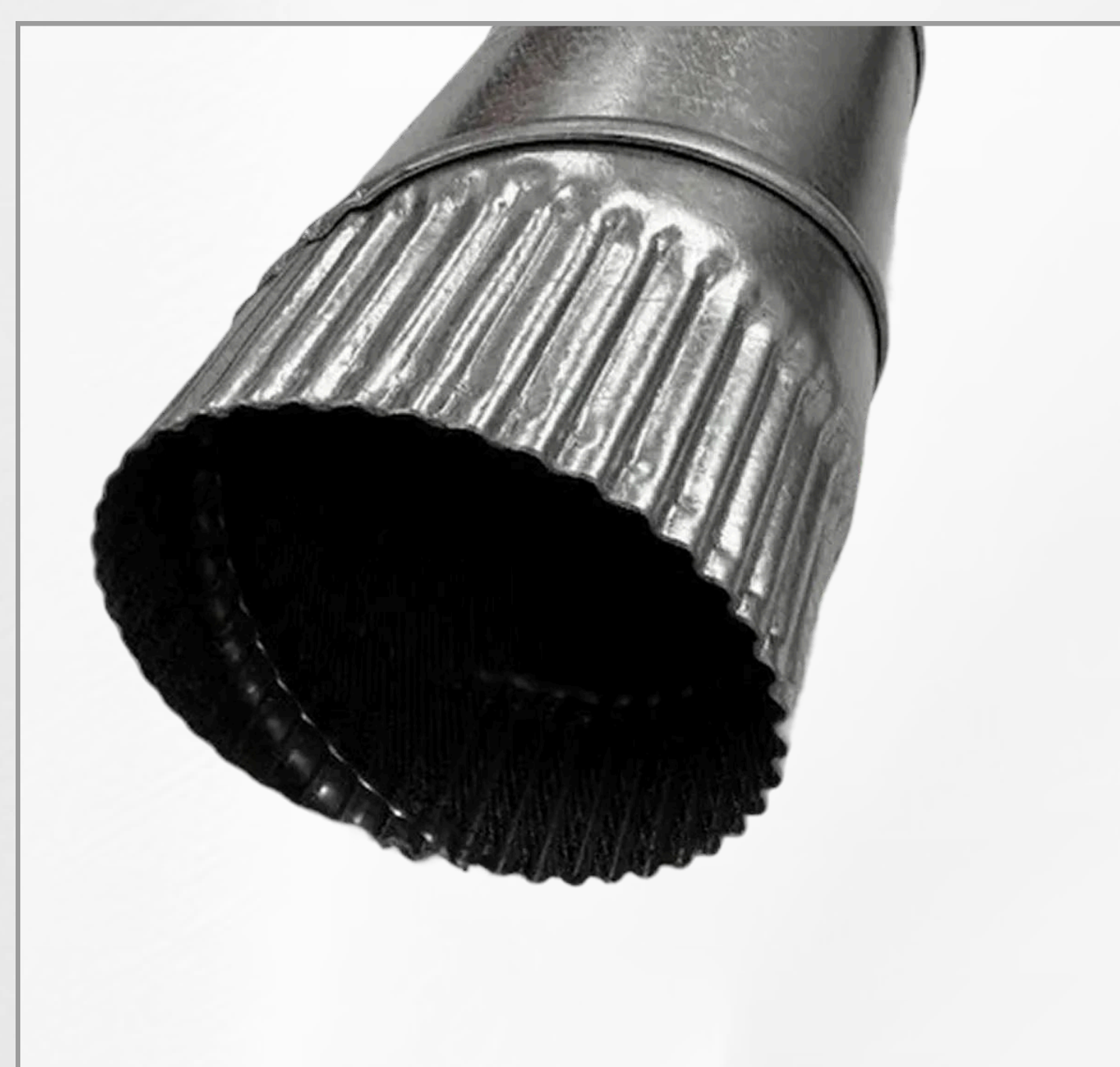
Part Number: ELB80100

(Recommended for candy cane requirements externally)

100mm WALL BRACKET

also available

Part Number: 4920094



RIGID GALV DUCTING

FLUE001 – 100mm wide x 900, long (crimped)
L10206LS – 100mm wide x 200mm long (crimped)
L20306-LS – 203mm x 900mm duct (crimped)
L25306-LS – 253mm x 1.8m duct (crimped)



RIGID ELBOW 0-90 DEGREES - 100mm

Part Number: ELB049030

EL45100 – 45 degree, 100mm wide (crimped)
EL90100 – 90 degree, 100mm wide (crimped)
B20345 – 45 degree rigid elbow 203mm wide
B20390 – 90 degree rigid elbow 203mm
B25345 – 45 degree rigid elbow 250mm
B25390 – 90 degree rigid elbow 250mm

*Not recommend for commercial use. Can only be used on Electric Dryers. Additional specialised fluing parts can be organised through our spare parts department