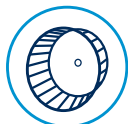


# 10.5KG LARGE CAPACITY DRYERS



## MDE20 AND MDG20



### TURBOVENT® SYSTEM

- A high-speed blower wheel optimizes performance in long vents
- High airflow helps reduce drying times for a wide variety of loads
- Helps to increase efficiency and increase the life of the machine



### CONTROLS TO MEET YOUR NEEDS

- Mechanical controls provide a simple user interface with robust, easy-to-use knobs
- Get flexibility and individual cycle pricing options for optimal earnings through Intelligent Controls with M-Series Technology, while end users can easily choose their preferred wash experience with one-touch cycle selection



### LARGE CAPACITY

- 10.5kg capacity dryer helps allow for large loads to be dried efficiently and effectively
- Delivers an optimal drying experience for users and helps maximize productivity



### BUILT TO LAST

- Porcelain enamel top — a durable finish that stands up to the demands of high-traffic
- Full wrap console — designed to help protect the internal components
- Front-panel accessibility — provides fast entry to internal components for streamlined self-service
- Extra-large reversible door — provides users unhindered access while loading and unloading



### CARD READER COMPATIBLE

- Order your new washer as Card Only to prevent vandalism and increase safety on site.
- Never have to worry about where the gold coins from your laundry end up with real time reporting and payment deposited straight into your nominated bank account.



#### COIN DROP EQUIPPED

MDE20PD (pictured)  
Also available in gas



#### NON-COIN

MDE20MN (pictured)  
Also available in gas

#### Single-Load Top-Load MATCHING Dryer Models - 50hz

Payment Configuration	Electric	Gas
Coin Drop or Card Reader Ready	MDE20PD	MDG20PD
Non-Coin	MDE20MN	MDG20MN



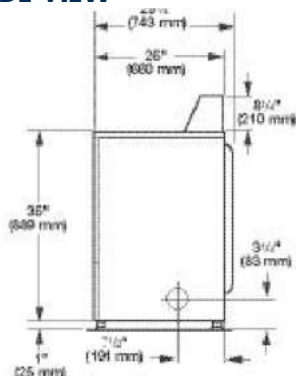
See [maytagcommerciallaundry.com](http://maytagcommerciallaundry.com) for warranty details.

# 10.5KG LARGE CAPACITY DRYERS

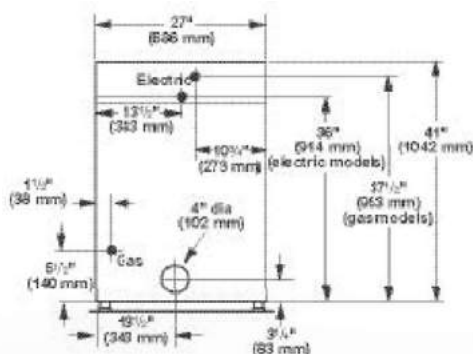


## MDE20 AND MDG20

### SIDE VIEW

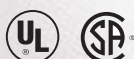


### BACK VIEW



#### Maximum EXHAUST DUCT length PER NUMBER OF TURNS

	Rigid Metal Vent	
	Box Hood and Louvered Style	Angled Hood Style
No. of 90° Turns		
0	64 ft. (19.5 m)	58 ft. (17.7 m)
1	54 ft. (16.5 m)	48 ft. (14.6 m)
2	44 ft. (13.4 m)	38 ft. (11.6 m)
3	35 ft. (10.7 m)	29 ft. (8.8 m)
4	27 ft. (8.2 m)	21 ft. (6.4 m)



\*Includes height of metercase.

\*\*Based on 2018 United States DOE J2 Testing with factory preset cycles.

Dimensions are for planning purposes only. See specific instructions for proper installation. Because of continuous product improvement, Maytag reserves the right to change specifications without notice.

Printed on Recycled Paper.

MODELS		
COIN DROP / CARD READY NON-VEND	MDE20PD MDE20MN	MDG20PD MDG20MN
Fuel Type	Electric	Gas
CAPACITY		
Cylinder Volume — liters	210	210
Drum Capacity	10.5kg	10.5kg
DIMENSIONS		
Width — mm	686	686
Depth — mm	743	743
Height — mm	1,092*	1,092*
Door Opening — mm	514	514
Exhaust Duct Diameter — in. (mm)	4 (101.6)**	4 (101.6)**
CRATED DIMENSIONS		
Crated Width — mm	731	731
Crated Depth — mm	782	782
Crated Height — mm	1,134	1,134
APPROXIMATE WEIGHT		
Uncrated — kg Coin Drop & Card Ready Models	56.7	64.4
Uncrated — kg Non-Coin Models	52.2	57.6
Crated — kg Coin Drop & Card Ready Models	61.2	68.9
Crated — kg Non-Coin Models	56.7	62.1
ELECTRICAL REQUIREMENTS		
Voltage	220-240V - 50Hz	220-240V - 50Hz
Breaker/Fuse — amps	25	10
Airflow — CFM (CMM)	215 (6.10)	230 (6.50)
Electric Heating Element (watts)	4,600	N/A
Gas Rating — BTU/hr (kcal/hr)	N/A	20,000 (5,040)
Gas Inlet Size — in.	N/A	3/8 N.P.T.
Motor Size — HP (kW)	1/3 (.25)	1/3 (.25)



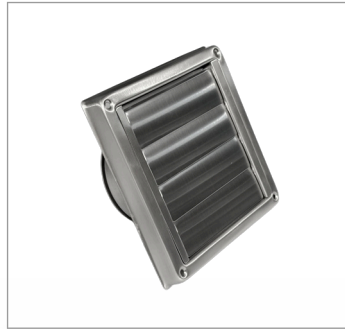
# FLUING & DUCTING ACCESSORIES FOR MAYTAG COMMERCIAL DRYERS

**MAYTAG**  
COMMERCIAL



**100mm THROUGH WALL KIT (STAINLESS STEEL)**

Part Number: DVS1SS



**GRAVITY VENT - MARINE GRADE STAINLESS STEEL 100mm**

Part Number: GVSS100



**FLEXIBLE DUCTING\* 100mm x 2.4m**

Part Number: AO48MX/9



**DRAFT BLOCKER 100mm**

Part Number: DBV100



**DRYER VENT CLEANING BRUSH**

Part Number: DVBRUSH8



**INTERNAL SIDE FLU KIT - TO CHANGE DRYER VENTING**

Part Number: W10470674



**RIGID BEND**

Part Number: ELB80100

(Recommended for candy cane requirements externally)

**100mm WALL BRACKET**  
also available

Part Number: 4920094



**RIGID GALV DUCTING**

FLUE001 – 100mm wide x 900, long (crimped)  
L10206LS – 100mm wide x 200mm long (crimped)  
L20306-LS – 203mm x 900mm duct (crimped)  
L25306-LS – 253mm x 1.8m duct (crimped)



**RIGID ELBOW 0-90 DEGREES - 100mm**

Part Number: ELB049030

EL45100 – 45 degree, 100mm wide (crimped)  
EL90100 – 90 degree, 100mm wide (crimped)  
B20345 – 45 degree rigid elbow 203mm wide  
B20390 – 90 degree rigid elbow 203mm  
B25345 – 45 degree rigid elbow 250mm  
B25390 – 90 degree rigid elbow 250mm

\*Not recommend for commercial use. Can only be used on Electric Dryers. Additional specialised fluing parts can be organised through our spare parts department



## Maytag Commercial Install Summary



### MAT20 & MAT23 Top Load Washer

- Standard 10AMP GPO within 1.0m to plug into
- ¾" hot and cold water taps within 1m
- Standpipe or laundry drain minimum 77cm high

#### Before operation:

- Installation manual to be read
- Unit to be levelled



### MHN33 Front Load Washer

- Standard 10AMP GPO within 1.0m to plug into
- ¾" hot and cold water taps within 1m
- Standpipe or laundry drain minimum 77cm high – if supplied on plinth, laundry drain to be 102cm high

#### Before operation:

- Installation manual to be read
- Shipping bolts to be removed
- Power cord to be pulled through
- Unit to be levelled

### MDE20 or MDE28 ELECTRIC Dryer.

- No power cord supplied - requires hardwiring into a dedicated 1 phase 25AMP circuit by your electrician.
- Requires fluing to external air using single skin 100mm rigid galv<sup>2</sup>

\*Natural gas as standard - LPG Conversion Kits available.

#### Before operation:

- Installation manual to be read
- Unit to be levelled

### MDG20 or MDG28 GAS Dryer.

- Standard 10AMP GPO within 1.0m to plug into
- Not Fitted
- Licensed gas plumber required to connect to gas and fluing on site
- Requires fluing to external air using single skin 100mm rigid galv<sup>2</sup>

\*Natural gas as standard - LPG Conversion Kits available.

#### Before operation:

- Installation manual to be read
- Unit to be levelled

### Install summary is a brief guide only and does not cover all requirements.

Full installation manual is supplied with each machine as hard copy and is also available via email on request.

**1** – Clearances are minimum for dryer free air requirements. Additional clearances may be required depending on fluing and supply requirements on site.

**2** - All dryers must be flued to external air with rigid galvanised ducting. Dryers in outdoor areas require fluing to direct heat and lint away from unit. Multiple /group dryer ducting requirements as per installation manual.

Ducting available from Dependable Laundry Solutions.





## Maytag Commercial Install Summary

### MLE22PN/PR/PD ELECTRIC Stack Washer/Dryer



- No power cord supplied - requires hardwiring into a dedicated 1 phase 25AMP circuit by your electrician.
- ¾" hot and cold water taps within 1m
- Standpipe or laundry drain minimal 77cm high
- Minimum 110mm clearance behind unit<sup>1</sup>
- Requires fluing to external air using single skin 100mm rigid galv<sup>2</sup>

#### Before operation:

- Installation manual to be read
- Shipping bolts to be removed
- Unit to be levelled
- Service key is bubble wrapped in machine drum – needs to be stored & kept

### MLG22PN/PR/PD GAS Stack Washer/Dryer

- Standard 10AMP GPO within 1.0m to plug into
- ¾" hot and cold water taps within 1m
- Standpipe or laundry drain minimal 77cm high
- Minimum 110mm clearance behind unit<sup>1</sup>
- Requires fluing to external air using single skin 100mm rigid galv<sup>2</sup>
- Licensed gas plumber to connect to gas and fluing

\*Natural gas as standard - LPG Conversion Kits available.

#### Before operation:

- Installation manual to be read
- Shipping bolts to be removed
- Power cord to be pulled through
- Unit to be levelled
- Service key is bubble wrapped in machine drum – needs to be stored & kept.

### MLE27PN/PD ELECTRIC Stack Dryer/Dryer

- No power cord supplied - requires hardwiring into a dedicated 1 phase 50AMP circuit by your electrician.
- Minimum 110mm clearance behind unit<sup>1</sup>
- Requires 2 x fluing to external air using single skin 100mm rigid galv<sup>2</sup>

#### Before operation:

- Installation manual to be read
- Unit to be levelled
- Service key is bubble wrapped in machine drum – needs to be stored & kept

### MLG27PN/PD GAS Stack Dryer/Dryer

- Standard 10AMP GPO within 1.0m to plug into
- Not Fitted
- Minimum 110mm clearance behind unit<sup>1</sup>
- Licensed gas plumber to connect to gas and fluing
- Requires 2 x fluing to external air using single skin 100mm rigid galv<sup>2</sup>

\*Natural gas as standard - LPG Conversion Kits available.

#### Before operation:

- Installation manual to be read
- Unit to be levelled
- Service key is bubble wrapped in machine drum – needs to be stored & kept