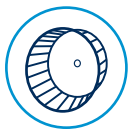


STACK WASHER/DRYER

9KG WASHER & 10.5KG DRYER



MLE22 AND MLG22



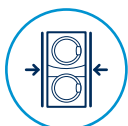
TURBOVENT® SYSTEM

- A high-speed blower wheel optimizes performance in long vents
- High airflow helps reduce drying times for a wide variety of loads
- Helps to increase efficiency and turns over the life of the machine



INTELLIGENT CONTROLS WITH M-SERIES TECHNOLOGY

- Easy-to-read diagnostics assist with quick identification of an issue helping to get the machine back into service
- Can be upgraded to Card Reader only to prevent vandalism and increase safety in your laundry
- End users can easily choose their preferred wash experience with one-touch selection
- Digital display clearly conveys prices, selections, and time remaining



SPACE-SAVING CONFIGURATION

- All within the floor space of a single unit, the large capacity of the 9kg washer provides ample room for bulky items, while the extra-large, 10.5kg dryer allows for loads to be dried effectively
- Saving space can still deliver an optimal cleaning experience for end-users and help maximize laundry throughput



BUILT TO LAST

- Porcelain enamel top — a durable finish that stands up to the demands of high-traffic
- Premium bearings — oversized premium NSK bearings are sealed for added protection of the drive system
- Robust hinge — heavy-duty, die-cast door hinge is built to withstand the rigors of commercial laundry



NON-COIN

MLE22PR (pictured)
Also available in gas

9kg Stack Washer/10.5kg Dryer		
Payment Configuration	Electric	Gas
Non-Coin	MLE22PR	MLG22PR
Coin Drop or Card Reader Ready	MLE22PD	MLG22PD



See maytagcommerciallaundry.com for warranty details.



COIN DROP OR CARD READER READY

MLE22PD (pictured)
Also available in gas

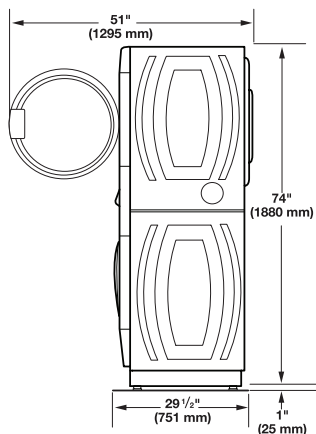
STACK WASHER/DRYER

9KG WASHER & 10.5KG DRYER

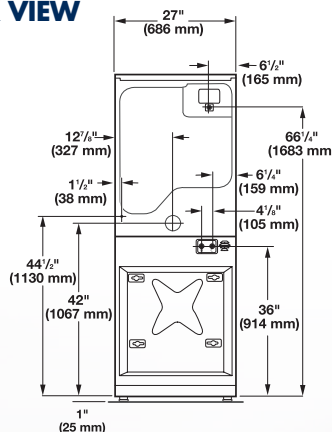


MLE22 AND MLG22

SIDE VIEW



BACK VIEW



Maximum Exhaust Duct Length Per Number of Turns

Rigid Metal Vent

Box Hood and
Louvered Style

Angled Hood Style

No. of
90° Turns

0	39.6 m	39.3 m
1	38.1 m	36.3 m
2	35.1 m	33.2 m
3	32.3 m	30.5 m
4	29.9 m	28.0 m



bsi.



*Use 4" (100 mm) diameter rigid aluminum or galvanized steel duct. Never use plastic, non-metal or combustible duct. See specific instructions for proper installation. Because of continuous product improvement, Maytag reserves the right to change specifications without notice. Export model ships without coin-drop mechanism.

Printed on Recycled Paper.

MODELS COIN DROP / CARD READY NON-COIN	MLE22PD MLE22PR	MLG22PD MLG22PR
Fuel Type	Electric	Gas
CAPACITY		
Washer	9kg	9kg
Dryer	10.5kg	10.5kg
DIMENSIONS		
Width — mm	686	686
Depth — mm	751	751
Height — mm	1,880	1,880
Door Opening — mm	362	362
Exhaust Duct Diameter — in. (mm)	4 (100)*	4 (100)*
CRATED DIMENSIONS		
Crated Width — mm	743	743
Crated Depth — mm	864	864
Crated Height — mm	1,924	1,924
APPROXIMATE WEIGHT		
Uncrated — kg	169	171
Crated — kg	173	176
REQUIREMENTS		
Voltage	220-240V - 50Hz	220-240V - 50Hz
Breaker/Fuse — amps - total per stack	25	10
Dryer Airflow — CFM (CMM)	215 (6.1)	230 (6.5)
Dryer Electric Heating Element (watts)	4,600	N/A
Dryer Gas Rating — BTU/hr (kcal/hr)	N/A	20,000 (5,040)
Dryer Gas Inlet Size — in.	N/A	3/8 N.P.T.
Dryer Motor Size — HP (kW)	1/3 (0.25)	1/3 (0.25)
Washer average water usage	40.5 Liters	
Washer Extraction Speed	300 G'Force / 1000 RPM	
Washer Motor Size	.09hp / .07Kw	



DEPENDABLE
LAUNDRY SOLUTIONS

For more information visit dependablelaundry.com.au or call **1800 629 824**

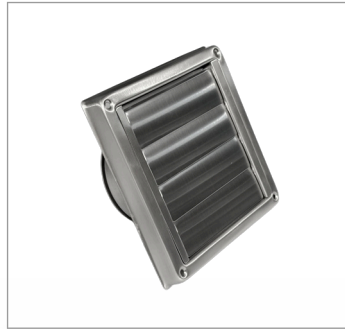
FLUING & DUCTING ACCESSORIES FOR MAYTAG COMMERCIAL DRYERS

MAYTAG
COMMERCIAL



100mm THROUGH WALL KIT (STAINLESS STEEL)

Part Number: DVS1SS



GRAVITY VENT - MARINE GRADE STAINLESS STEEL 100mm

Part Number: GVSS100



FLEXIBLE DUCTING* 100mm x 2.4m

Part Number: AO48MX/9



DRAFT BLOCKER 100mm

Part Number: DBV100



DRYER VENT CLEANING BRUSH

Part Number: DVBRUSH8



INTERNAL SIDE FLU KIT - TO CHANGE DRYER VENTING

Part Number: W10470674



RIGID BEND

Part Number: ELB80100

(Recommended for candy cane requirements externally)

100mm WALL BRACKET
also available

Part Number: 4920094



RIGID GALV DUCTING

FLUE001 – 100mm wide x 900, long (crimped)
L10206LS – 100mm wide x 200mm long (crimped)
L20306-LS – 203mm x 900mm duct (crimped)
L25306-LS – 253mm x 1.8m duct (crimped)



RIGID ELBOW 0-90 DEGREES - 100mm

Part Number: ELB049030

EL45100 – 45 degree, 100mm wide (crimped)
EL90100 – 90 degree, 100mm wide (crimped)
B20345 – 45 degree rigid elbow 203mm wide
B20390 – 90 degree rigid elbow 203mm
B25345 – 45 degree rigid elbow 250mm
B25390 – 90 degree rigid elbow 250mm

*Not recommend for commercial use. Can only be used on Electric Dryers. Additional specialised fluing parts can be organised through our spare parts department



Maytag Commercial Install Summary



MAT20 & MAT23 Top Load Washer

- Standard 10AMP GPO within 1.0m to plug into
- ¾" hot and cold water taps within 1m
- Standpipe or laundry drain minimum 77cm high

Before operation:

- Installation manual to be read
- Unit to be levelled



MHN33 Front Load Washer

- Standard 10AMP GPO within 1.0m to plug into
- ¾" hot and cold water taps within 1m
- Standpipe or laundry drain minimum 77cm high – if supplied on plinth, laundry drain to be 102cm high

Before operation:

- Installation manual to be read
- Shipping bolts to be removed
- Power cord to be pulled through
- Unit to be levelled

MDE20 or MDE28 ELECTRIC Dryer.

- No power cord supplied - requires hardwiring into a dedicated 1 phase 25AMP circuit by your electrician.
- Requires fluing to external air using single skin 100mm rigid galv²

*Natural gas as standard - LPG Conversion Kits available.

Before operation:

- Installation manual to be read
- Unit to be levelled

MDG20 or MDG28 GAS Dryer.

- Standard 10AMP GPO within 1.0m to plug into
- Not Fitted
- Licensed gas plumber required to connect to gas and fluing on site
- Requires fluing to external air using single skin 100mm rigid galv²

*Natural gas as standard - LPG Conversion Kits available.

Before operation:

- Installation manual to be read
- Unit to be levelled

Install summary is a brief guide only and does not cover all requirements.

Full installation manual is supplied with each machine as hard copy and is also available via email on request.

1 – Clearances are minimum for dryer free air requirements. Additional clearances may be required depending on fluing and supply requirements on site.

2 - All dryers must be flued to external air with rigid galvanised ducting. Dryers in outdoor areas require fluing to direct heat and lint away from unit. Multiple /group dryer ducting requirements as per installation manual.

Ducting available from Dependable Laundry Solutions.



Maytag Commercial Install Summary

MLE22PN/PR/PD ELECTRIC Stack Washer/Dryer



- No power cord supplied - requires hardwiring into a dedicated 1 phase 25AMP circuit by your electrician.
- ¾" hot and cold water taps within 1m
- Standpipe or laundry drain minimal 77cm high
- Minimum 110mm clearance behind unit¹
- Requires fluing to external air using single skin 100mm rigid galv²

Before operation:

- Installation manual to be read
- Shipping bolts to be removed
- Unit to be levelled
- Service key is bubble wrapped in machine drum – needs to be stored & kept

MLG22PN/PR/PD GAS Stack Washer/Dryer

- Standard 10AMP GPO within 1.0m to plug into
- ¾" hot and cold water taps within 1m
- Standpipe or laundry drain minimal 77cm high
- Minimum 110mm clearance behind unit¹
- Requires fluing to external air using single skin 100mm rigid galv²
- Licensed gas plumber to connect to gas and fluing

*Natural gas as standard - LPG Conversion Kits available.

Before operation:

- Installation manual to be read
- Shipping bolts to be removed
- Power cord to be pulled through
- Unit to be levelled
- Service key is bubble wrapped in machine drum – needs to be stored & kept.

MLE27PN/PD ELECTRIC Stack Dryer/Dryer

- No power cord supplied - requires hardwiring into a dedicated 1 phase 50AMP circuit by your electrician.
- Minimum 110mm clearance behind unit¹
- Requires 2 x fluing to external air using single skin 100mm rigid galv²

Before operation:

- Installation manual to be read
- Unit to be levelled
- Service key is bubble wrapped in machine drum – needs to be stored & kept

MLG27PN/PD GAS Stack Dryer/Dryer

- Standard 10AMP GPO within 1.0m to plug into
- Not Fitted
- Minimum 110mm clearance behind unit¹
- Licensed gas plumber to connect to gas and fluing
- Requires 2 x fluing to external air using single skin 100mm rigid galv²

*Natural gas as standard - LPG Conversion Kits available.

Before operation:

- Installation manual to be read
- Unit to be levelled
- Service key is bubble wrapped in machine drum – needs to be stored & kept