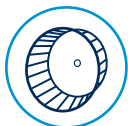


10.5KG LARGE CAPACITY DRYERS - 20AMP



MDE20 AND MDG20



TURBOVENT® SYSTEM

- A high-speed blower wheel optimises performance in long vents
- High airflow helps reduce drying times for a wide variety of loads
- Helps to increase efficiency and increase the life of the machine



CONTROLS TO MEET YOUR NEEDS

- Mechanical controls provide a simple user interface with robust, easy-to-use knobs
- Get flexibility and individual cycle pricing options for optimal earnings through Intelligent Controls with M-Series Technology, while end users can easily choose their preferred wash experience with one-touch cycle selection



LARGE CAPACITY

- 10.5kg capacity dryer helps allow for large loads to be dried efficiently and effectively
- Delivers an optimal drying experience for users and helps maximise productivity



BUILT TO LAST

- Porcelain enamel top — a durable finish that stands up to the demands of high-traffic
- Full wrap console — designed to help protect the internal components
- Front-panel accessibility — provides fast entry to internal components for streamlined self-service
- Extra-large reversible door — provides users unhindered access while loading and unloading



CARD READER COMPATIBLE

- Order your new washer as Card Only to prevent vandalism and increase safety on site.
- Never have to worry about where the gold coins from your laundry end up with real time reporting and payment deposited straight into your nominated bank account.



COIN DROP EQUIPPED

MDE20PD (pictured)
Also available in gas



NON-COIN

MDE20MN (pictured)
Also available in gas

Single-Load Top-Load MATCHING Dryer Models - 50hz

Payment Configuration	Electric	Gas
Coin Drop or Card Reader Ready	MDE20PD	MDG20PD
Non-Coin	MDE20MN	MDG20MN



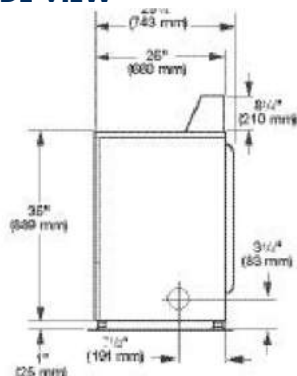
See maytagcommerciallaundry.com for warranty details.

10.5KG LARGE CAPACITY DRYERS - 20AMP

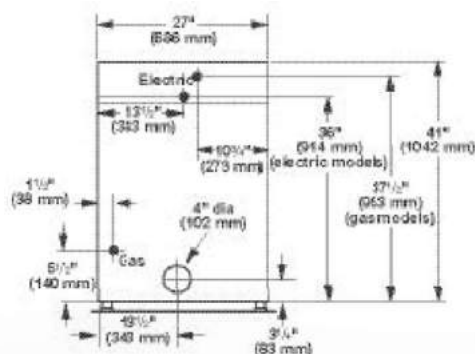


MDE20 AND MDG20

SIDE VIEW



BACK VIEW



Maximum EXHAUST DUCT length PER NUMBER OF TURNS

Rigid Metal Vent

Box Hood and
Louvered Style

Angled Hood Style

No. of
90° Turns



0	64 ft. (19.5 m)	58 ft. (17.7 m)
1	54 ft. (16.5 m)	48 ft. (14.6 m)
2	44 ft. (13.4 m)	38 ft. (11.6 m)
3	35 ft. (10.7 m)	29 ft. (8.8 m)
4	27 ft. (8.2 m)	21 ft. (6.4 m)



*Includes height of metercase.

**Based on 2018 United States DOE J2 Testing with factory preset cycles.

Dimensions are for planning purposes only. See specific instructions for proper installation. Because of continuous product improvement, Maytag reserves the right to change specifications without notice.

Printed on Recycled Paper.

MODELS		
COIN DROP / CARD READY NON-VEND	MDE20PD MDE20MN	MDG20PD MDG20MN
Fuel Type	Electric	Gas
CAPACITY		
Cylinder Volume — liters	210	210
Drum Capacity	10.5kg	10.5kg
DIMENSIONS		
Width — mm	686	686
Depth — mm	743	743
Height — mm	1,092*	1,092*
Door Opening — mm	514	514
Exhaust Duct Diameter — in. (mm)	4 (101.6)**	4 (101.6)**
CRATED DIMENSIONS		
Crated Width — mm	731	731
Crated Depth — mm	782	782
Crated Height — mm	1,134	1,134
APPROXIMATE WEIGHT		
Uncrated — kg Coin Drop & Card Ready Models	56.7	64.4
Uncrated — kg Non-Coin Models	52.2	57.6
Crated — kg Coin Drop & Card Ready Models	61.2	68.9
Crated — kg Non-Coin Models	56.7	62.1
ELECTRICAL REQUIREMENTS		
Voltage	220-230V	220-240V - 50Hz
Breaker/Fuse — amps	20	10
Airflow — CFM (CMM)	215 (6.10)	230 (6.50)
Electric Heating Element (watts)	4,000	N/A
Gas Rating — BTU/hr (kcal/hr)	N/A	20,000 (5,040)
Gas Inlet Size — in.	N/A	3/8 N.P.T.
Motor Size — HP (kW)	1/3 (.25)	1/3 (.25)

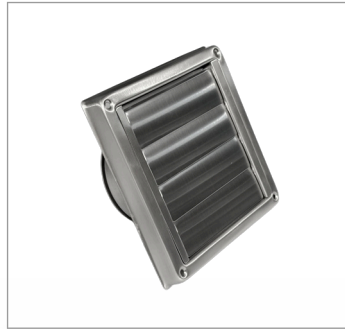
FLUING & DUCTING ACCESSORIES FOR MAYTAG COMMERCIAL DRYERS

MAYTAG
COMMERCIAL



100mm THROUGH WALL KIT (STAINLESS STEEL)

Part Number: DVS1SS



GRAVITY VENT - MARINE GRADE STAINLESS STEEL 100mm

Part Number: GVSS100



FLEXIBLE DUCTING* 100mm x 2.4m

Part Number: AO48MX/9



DRAFT BLOCKER 100mm

Part Number: DBV100



DRYER VENT CLEANING BRUSH

Part Number: DVBRUSH8



INTERNAL SIDE FLU KIT - TO CHANGE DRYER VENTING

Part Number: W10470674



RIGID BEND

Part Number: ELB80100

(Recommended for candy cane requirements externally)

100mm WALL BRACKET
also available

Part Number: 4920094



RIGID GALV DUCTING

FLUE001 – 100mm wide x 900, long (crimped)

L10206LS – 100mm wide x 200mm long (crimped)

L20306-LS – 203mm x 900mm duct (crimped)

L25306-LS – 253mm x 1.8m duct (crimped)



RIGID ELBOW 0-90 DEGREES - 100mm

Part Number: ELB049030

EL45100 – 45 degree, 100mm wide (crimped)

EL90100 – 90 degree, 100mm wide (crimped)

B20345 – 45 degree rigid elbow 203mm wide

B20390 – 90 degree rigid elbow 203mm

B25345 – 45 degree rigid elbow 250mm

B25390 – 90 degree rigid elbow 250mm

*Not recommend for commercial use. Can only be used on Electric Dryers. Additional specialised fluing parts can be organised through our spare parts department



Maytag Commercial Install Summary



MAT20 & MAT23 Top Load Washer

- Standard 10AMP GPO within 1.0m to plug into
- ¾" hot and cold water taps within 1m
- Standpipe or laundry drain minimum 77cm high

Before operation:

- Installation manual to be read
- Unit to be levelled



MHN33 Front Load Washer

- Standard 10AMP GPO within 1.0m to plug into
- ¾" hot and cold water taps within 1m
- Standpipe or laundry drain minimum 77cm high – if supplied on plinth, laundry drain to be 102cm high

Before operation:

- Installation manual to be read
- Shipping bolts to be removed
- Power cord to be pulled through
- Unit to be levelled



MDE20 or MDE28 ELECTRIC Dryer.

- No power cord supplied - requires hardwiring into a dedicated 1 phase 20AMP (MDE20) or 25AMP (MDE28) circuit by your electrician.
- Requires fluing to external air using single skin 100mm rigid galv²

*Natural gas as standard - LPG Conversion Kits available.

- Installation manual to be read
- Unit to be levelled



MDG20 or MDG28 GAS Dryer.

- Standard 10AMP GPO within 1.0m to plug into
- Not Fitted
- Licensed gas plumber required to connect to gas and fluing on site
- Requires fluing to external air using single skin 100mm rigid galv²

*Natural gas as standard - LPG Conversion Kits available.

Before operation:

- Installation manual to be read
- Unit to be levelled

Install summary is a brief guide only and does not cover all requirements.

Full installation manual is supplied with each machine as hard copy and is also available via email on request.

1 – Clearances are minimum for dryer free air requirements. Additional clearances may be required depending on fluing and supply requirements on site.

2 - All dryers must be flued to external air with rigid galvanised ducting. Dryers in outdoor areas require fluing to direct heat and lint away from unit. Multiple /group dryer ducting requirements as per installation manual.

Ducting available from Dependable Laundry Solutions.





Maytag Commercial Install Summary

MLE22PN/PR/PD ELECTRIC Stack Washer/Dryer



- No power cord supplied - requires hardwiring into a dedicated 1 phase 25AMP circuit by your electrician.
- ¾" hot and cold water taps within 1m
- Standpipe or laundry drain minimal 77cm high
- Minimum 110mm clearance behind unit¹
- Requires fluing to external air using single skin 100mm rigid galv²

Before operation:

- Installation manual to be read
- Shipping bolts to be removed
- Unit to be levelled
- Service key is bubble wrapped in machine drum – needs to be stored & kept

MLG22PN/PR/PD GAS Stack Washer/Dryer

- Standard 10AMP GPO within 1.0m to plug into
- ¾" hot and cold water taps within 1m
- Standpipe or laundry drain minimal 77cm high
- Minimum 110mm clearance behind unit¹
- Requires fluing to external air using single skin 100mm rigid galv²
- Licensed gas plumber to connect to gas and fluing

*Natural gas as standard - LPG Conversion Kits available.

Before operation:

- Installation manual to be read
- Shipping bolts to be removed
- Power cord to be pulled through
- Unit to be levelled
- Service key is bubble wrapped in machine drum – needs to be stored & kept.

MLE27PN/PD ELECTRIC Stack Dryer/Dryer

- No power cord supplied - requires hardwiring into a dedicated 1 phase 50AMP circuit by your electrician.
- Minimum 110mm clearance behind unit¹
- Requires 2 x fluing to external air using single skin 100mm rigid galv²

Before operation:

- Installation manual to be read
- Unit to be levelled
- Service key is bubble wrapped in machine drum – needs to be stored & kept

MLG27PN/PD GAS Stack Dryer/Dryer

- Standard 10AMP GPO within 1.0m to plug into
- Not Fitted
- Minimum 110mm clearance behind unit¹
- Licensed gas plumber to connect to gas and fluing
- Requires 2 x fluing to external air using single skin 100mm rigid galv²

*Natural gas as standard - LPG Conversion Kits available.

Before operation:

- Installation manual to be read
- Unit to be levelled
- Service key is bubble wrapped in machine drum – needs to be stored & kept

